



**Quick start guide for the  
VK2-PVM27CAM  
VK2-PVM32CAM**

## Before You Begin

Read these instructions before installing or operating this product.

**Note:** This installation should be made by a qualified service person and should conform to local codes.

This manual provides installation and operation information. To use this document, you must have the following minimum qualifications:

- A basic knowledge of CCTV systems and components
- A basic knowledge of electrical wiring, low-voltage electrical connections and IP networking / infrastructure

## Intended use

Only use this product for its designated purpose; refer to the product specification and user documentation.

## Customer Support

For assistance in installing, operating, maintaining and troubleshooting this product refer to this document and any other documentation provided. If you still have questions, please contact Norbain Technical Support and Sales:

**Norbain SD, Inspired, East Hampstead RD, Bracknell, RG12 1YQ.**

**UK +44 (0) 118 912 5000**

**Vista Technical Helpline: +44 (0) 118 912 5125**

**Note:** You should be at the equipment and ready with details before calling Vista Technical Support.

## Conventions Used in this Manual

**Boldface** or button icons highlight command entries. The following **WARNING**, **CAUTION** and **Note** statements identify potential hazards that can occur if the equipment is not handled properly:



**\* WARNING:**

Improper use of this equipment can cause severe bodily injury or equipment damage.

---



**\*\* Caution:**

Improper use of this equipment can cause equipment damage.

---

**Note:** Notes contain important information about a product or procedure.



This apparatus is manufactured to comply with the radio interference. A Declaration of Conformity in accordance with the following EU standards has been made. The manufacturer declares that the product supplied with this document is compliant the provisions of the EMC Directive 2004/108/EC, the CE Marking Directive 93/68 EEC and all associated amendments.

All lead-free products offered by the company comply with the requirements of the European law on the Restriction of Hazardous Substances (RoHS) directive: 2011/65/EU, which means our manufacture processes and products are strictly “lead-free” and without the hazardous substances cited in the directive.



The crossed-out wheeled bin mark symbolizes that within the European Union the product must be collected separately at the product end-of-life. This applies to your product and any peripherals marked with this symbol. Do not dispose of these products as unsorted municipal waste.

\* This symbol indicates electrical warnings and cautions.

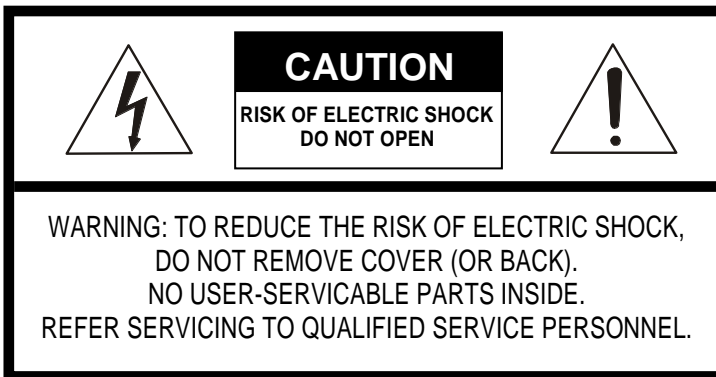
\*\* This symbol indicates general warnings and cautions.

NORBAIN SD reserves the right to make changes to the product and specification of the product from time to time without prior notice.

### WARNINGS AND CAUTIONS:

To reduce the risk of fire or electric shock, do not insert any metallic objects through the ventilation grills or other openings on the equipment.

### CAUTION



## IMPORTANT SAFEGUARDS

---

### 1. READ AND RETAIN INSTRUCTIONS

Read the instruction manual before operating the equipment. Retain the manual for future reference.

### 2. CLEANING

Turn the unit off and unplug from the power outlet before cleaning. Use a damp cloth for cleaning. Do not use harsh cleansers or aerosol cleaners.

### 3. ATTACHMENTS

Do not use attachments unless recommended by manufacturer as they may affect the functionality of the unit and result in the risk of fire, electric shock or injury.

### 4. MOISTURE

Do not use equipment near water or other liquids unless it is IP rated.

### 5. ACCESSORIES

Equipment should be installed in a safe, stable location. Any wall or shelf mounting accessory equipment should be installed using the manufacturer's Instructions. Care should be used when moving heavy equipment. Quick stops, excessive force, and uneven surfaces may cause the equipment to fall causing serious injury to persons and objects.

### 6. VENTILATION

Openings in the equipment, if any, are provided for ventilation to ensure reliable operation of the unit and to protect it from overheating. These openings must not be blocked or covered.

### 7. POWER SOURCES

The equipment should be operated only from the type of power source indicated on the marking label. If you are not sure of the type of power supplied at the installation location, contact your dealer. For equipment designed to operate from battery power, refer to the operating instructions.

### 8. GROUNDING OR POLARIZATION

Equipment that is powered through a polarized plug (a plug with one blade wider than the other) will fit into the power outlet only one way. This is a safety feature. If you are unable to insert the plug fully into the outlet, try reversing the plug. Do not defeat the safety purpose of the polarized plug.

**Alternate Warning:** If the equipment is powered through a three-way grounding-type plug, a plug having a third (grounding) pin, the plug will only fit into a grounding-type power outlet. This is a safety feature. Do not defeat the safety purpose of the grounding-type plug. If your outlet does not have the grounding plug receptacle, contact your local electrician.

### 9. CORD AND CABLE PROTECTION

Route power cords and cables in such a manner to protect them from damage by being walked on or pinched by items placed upon or against them.

### 10. LIGHTNING

For protection of the equipment during a lightning storm it is recommended that adequate surge protection is used. This will assist / prevent damage to the equipment due to lightning or power-line surges.

### 11. OVERLOADING

Do not overload wall outlets and extension cords as this can result in a risk of fire or electric shock.

### 12. SERVICING

Unless qualified to do so, do not attempt to service the equipment yourself as opening or removing covers may expose you to dangerous voltage or other hazards.

### 13. DAMAGE REQUIRING SERVICE

Unplug the equipment from the wall outlet and refer servicing to qualified service personnel under the following conditions:

- A. When the power supply cord or the plug has been damaged.
- B. If liquid has spilled or objects have fallen into the Unit.
- C. If the equipment has been exposed to water or other liquids.

**D.** If the equipment does not operate normally by following the operating instructions, adjust those controls that are covered by the operating instructions as Improper adjustment for other controls may result in damage to the unit.

**E.** If the equipment has been dropped or the casing is damaged.

**F.** When the equipment exhibits a distinct change in performance.

#### **14. REPLACEMENT PARTS**

When replacement parts are required, be sure the service technician uses replacement parts specified by the manufacturer or that have the same characteristics as the original part.

Unauthorized substitutions may result in fire, electric shock, or other hazards.

#### **15. SAFETY CHECK**

Upon completion of any service or repairs to the equipment, ask the service technician to perform safety checks to verify that the equipment is in proper operating condition.

#### **16. FIELD INSTALLATION**

The installation of equipment should be made by a qualified service person and should conform to all local codes.

#### **17. CAUTION**

THESE SERVICING INSTRUCTIONS ARE FOR USE BY QUALIFIED SERVICE PERSONNEL ONLY. TO REDUCE THE RISK OF ELECTRIC SHOCK DO NOT PERFORM ANY SERVICING OTHER THAN THAT CONTAINED IN THE OPERATING INSTRUCTIONS UNLESS YOU ARE QUALIFIED TO DO SO.

**18.** Use certified/Listed Class 2 power source only.

### **CE COMPLIANCE STATEMENT**

---

#### **WARNING**

This is a Class A product. In a domestic environment this product may cause radio interference in which case the user may be required to take adequate measures.

## CONTENTS OF PACKAGE

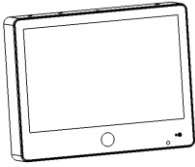


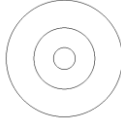

Installation of the VK2-PVM27CAM/VK2-PVM32CAM must be performed by qualified service personnel in accordance with all local and national electrical and mechanical codes.

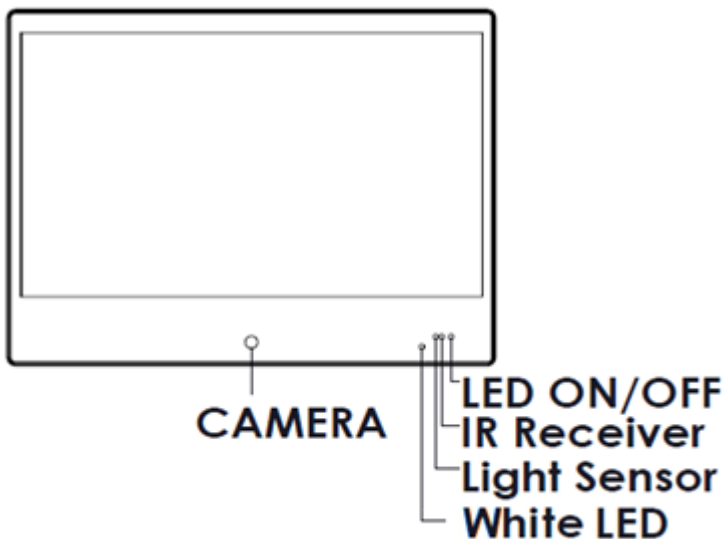
Carefully remove the VK2-PVM27CAM/VK2-PVM32CAM and its accessories from the carton and verify that they were not damaged in shipment.

The content of the package includes:

1. VK2-PVM27CAM/VK2-PVM32CAM
2. IR remote
3. This guide
4. CD
5. M6X10 SCREW X4

### Unpack and verify that following contents were included

				
<b>PVM</b> with access door and security screw	<b>Remote Control</b>	<b>Quick Start Guide</b>	<b>CD</b>	<b>M6X10 SCREW X4</b>

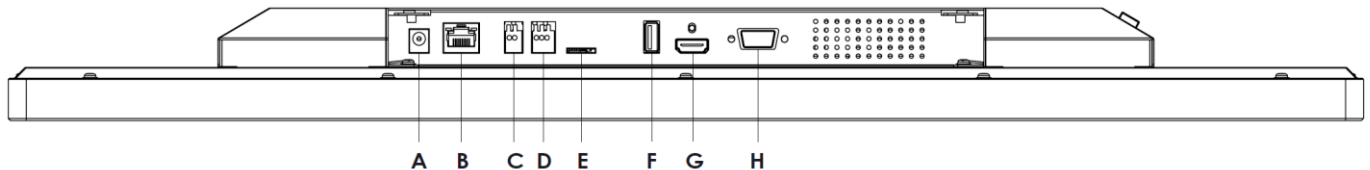


# INSTALLATION

---

For the operation of the network camera, it is necessary to connect a network cable for data transmission, power connection from a PoE+ source, alternatively a separate 24VDC power supply can be used to power the monitor. In addition to power an external alarm cable can be connected, or a Micro SD card can be inserted to give a local recording function.

## 1.1 Connections



### A. Connecting the Power

Connect the power of 24 VDC for the PVM for the DC power.

- Be careful not to reverse the polarity when connecting the power cable.
- A router featuring PoE+ (Power over Ethernet) can also be used to supply power to the camera.
- For the power specifications, refer to the appendix, product specification.

**If PoE+ and 24 VDC are both applied, the camera will be supplied with power from PoE+.**

### B. PoE+ (Ethernet)

Connect a standard RJ-45 cable to the network port of the network camera. Generally a cross-over cable is used for directly connection to PC, while a direct cable is used for connection to a hub. You can also use a router featuring **PoE+(IEEE802.3AT)** (Power over Ethernet) to supply power to the camera

### C. Connecting Audio

Connect external Mic to audio input line.

### D. Alarms

AI(Alarm In): You can use external devices to signal the network camera to react on

G(Ground): Connect the ground side of the alarm input and/or alarm output to the G (Ground) connector.

AO(Alarm Out): The network camera can activate external devices such as buzzers or lights. Connect the device to the AO (Alarm Out) and G (Ground) connectors.

### E. Micro SD memory slot on the Bottom Board

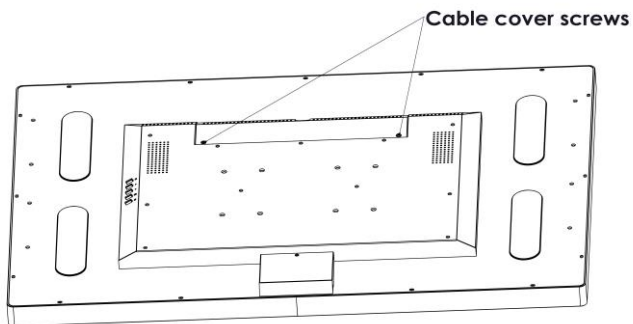
**F. USB:** For Monitor FW Update

**G. HDMI:** HDMI signal input

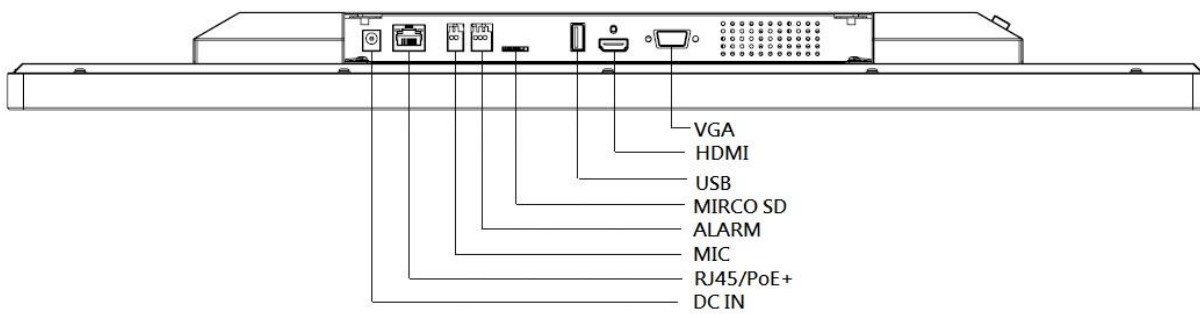
**H. VGA:** D-sub 15pin input

## 1.2 Mechanical Installation

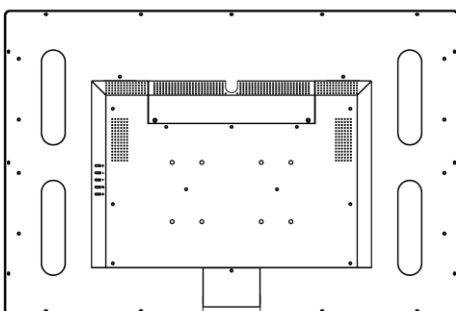
1) Remove the access cover:



2) Connect ethernet cable to RJ45 port: PoE+ (IEEE802.3at) 30W required.

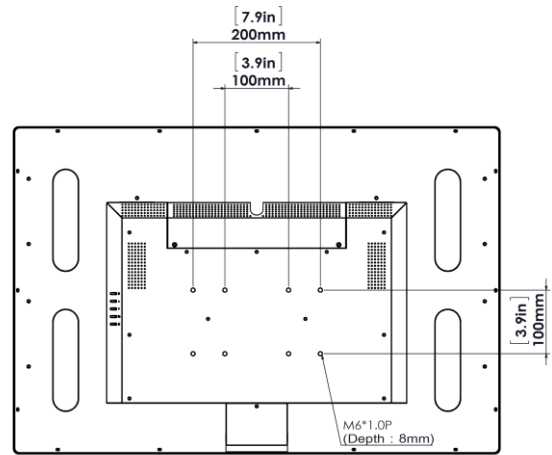
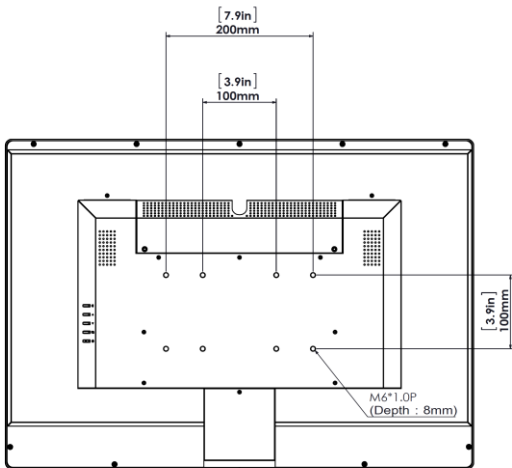


3) Replace access cover:



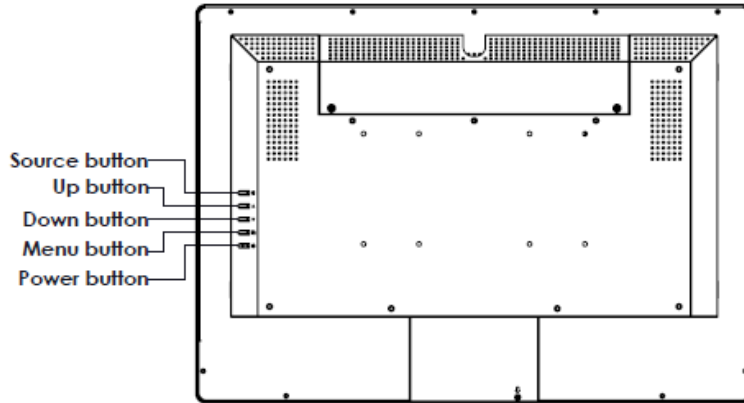


- 4) Mount the VK2-PVM27CAM/VK2-PVM32CAM to bracketry suitable for the application using either the VESA100 x 100 or VESA200 x 100 on the rear




### 1.3 OSD ACCESS / IR REMOTE

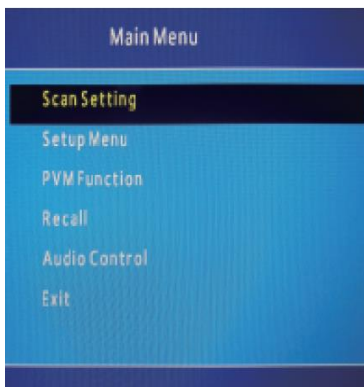
Use either the buttons on the side of the VK2-PVM27CAM/VK2-PVM32CAM to enter the set up menus for the monitor screen



Use the MENU key on the IR Remote to access the Camera function menus.



- Power key: Monitor power on/off
- Mute key: Mute the Audio
- Key: Up/Down/Left/Right scrolling the cursor to desired function.
- OK key: Confirmation key during the OSD operation.
- Menu Key: Camera OSD control.
- Exit Key: Exit the OSD menu.
-  : Monitor OSD control.
- Source : Select VGA/HDMI/CAMERA
- Info :Information



**NOTE:** For instructions on loading logos into the monitor see the main user manual page 70 section 3.6.5.1 PVM Logo Upload

## 1.4 Resetting to the factory default settings

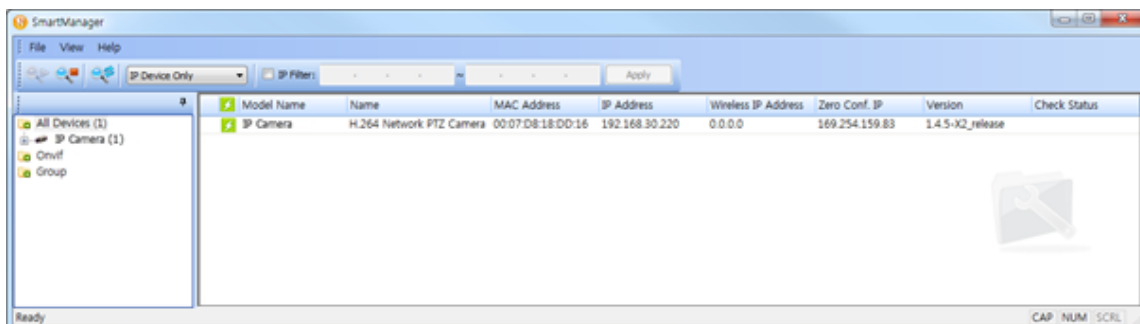
To reset the monitor to the original factory settings, in the monitor web page, go to the Setup > System > Maintenance web page (described in “System > Maintenance” of User Manual) or use the remote control “Menu > Restore Defaults > All” change to YES and then click OK button.

**CAUTION:** When performing a Factory Reset, you will lose any settings that have been saved.  
(Default IP 192.168.30.220)

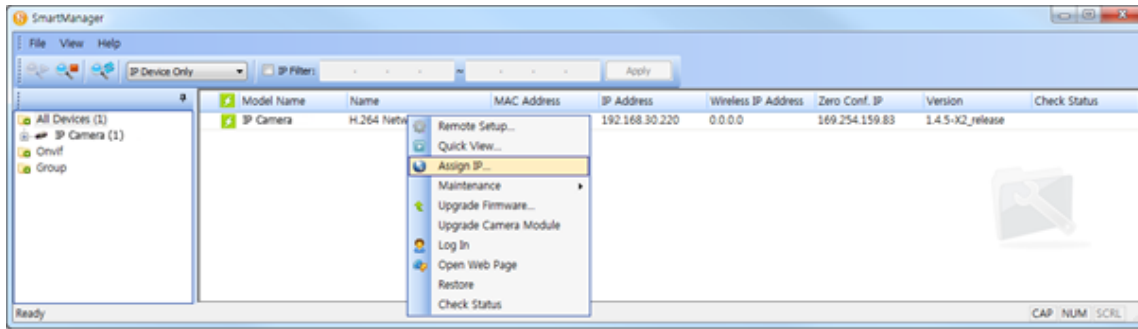
## 1.5 Network Connection & IP assignment

When a monitor is first connected to the network, it is necessary to allocate an IP address to the device with the “SmartManager” utility on the CD. (Default IP 192.168.30.220)

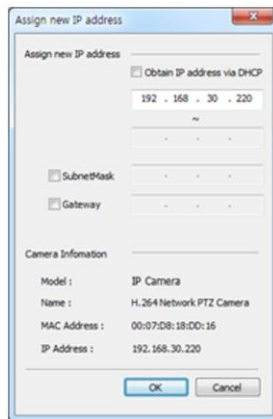
- 1) Connect the network camera/device to the network and power up.
- 2) Start SmartManager utility (Start > All programs > SmartManager > SmartManager). The main window will display, and after a short while any network devices connected to the network will be displayed in the list.



- 3) Select the camera on the list and click right button of the mouse. You can see the pop-up menu as below.



4) Select Assign IP Address. The Assign IP window will display. Enter the required IP address.



**NOTE:** For more information, refer to the SmartManager User Manual.



» Web: [vista-cctv.com](http://vista-cctv.com)    » Email: [info@vista-cctv.com](mailto:info@vista-cctv.com)    » Tel: 0118 912 5000

