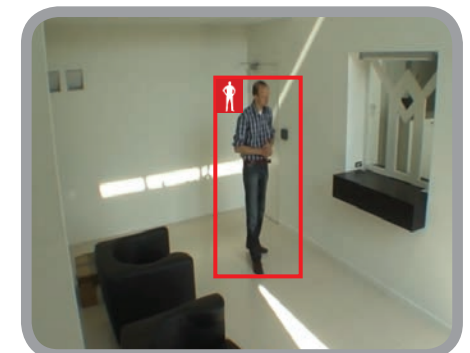




Unique Features

- Adjustable detection and mask areas to suit application
- Advanced logic to double-knock with other events¹
- Fast installation and commissioning
- Remote servicing
- Supports for IP and Analogue cameras¹
- Independent object and contrast sensitivity settings
- Versatile loiter time adjustments to suit target and application
- Rapid verification/response with clearly highlighted targets
- Audio link can be used to deter offenders¹



Description

The ADPRO LoiterTrace application provides high performance loiter detection using video analytics specifically designed for indoor and outdoor operation. LoiterTrace is an image analysis tool able to detect humans remaining too long in the scene. The analytic uses advanced algorithms to maximize target detection and tracking. It is able to detect loitering persons even if they remain static for a long time (like when the person is sleeping). With simple “region of interest” configuration, LoiterTrace detection is suited for office lobbies, entrance halls of public buildings, etc. Supporting up to 32 channels¹ on the ADPRO XO-enabled NVR+ devices, LoiterTrace complements the powerful recording, transmission, and alarm handling capabilities of these platforms. With the ability to transmit alarm images to a remote central monitoring station, LoiterTrace increases the effectiveness of off-site monitoring. Now you have the option of having your site security efficiently managed by experienced security personnel.

Specifications

- A video analytic application that detects loitering
- Designed for indoor and outdoor applications
- Detects moving targets and targets that stop
- Well suited to detecting people outside foyers, etc.
- Intuitive parameters to minimise false alarms
- Ideal for initiating operator talk-down to prevent crime
- Ideal for monitoring uncrowded areas
- Unique settings specific to loiter detection

Typical Applications

- 24/365 monitoring of public areas such as parks, car parks, lobbies and entrances
- Reducing undesirable behaviour linked to substance abuse
- Reducing risk to property such as vandalism, graffiti, arson
- Reducing risk to people such as harassment near building entrances
- Reducing risk of crime such as identity theft near ATMs
- Alert staff to potential vagrants and reduce crime through early intervention

Licensing

LoiterTrace is a software-only, licensed product. Licenses are available in bundles, and trial licenses are available free of charge. Speak to your salesperson for details. You can also visit www.xtralis.com/analytics for the latest information on the product, and www.xtralis.com/license for information on the flexible licensing options available.

Camera Considerations

Note that LoiterTrace should only be used in the home position of PTZ cameras. Also note that built-in ring-lights on cameras are not recommended for 24/7 outdoor analytics applications, other sources of lighting should be considered.

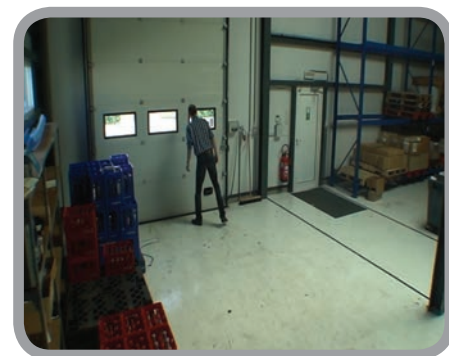
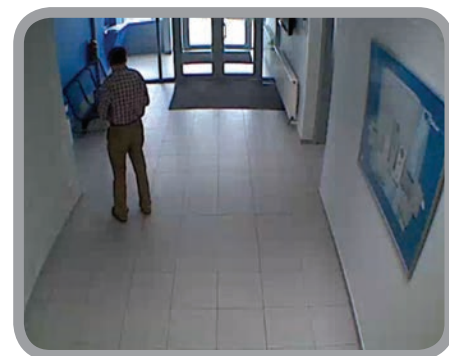
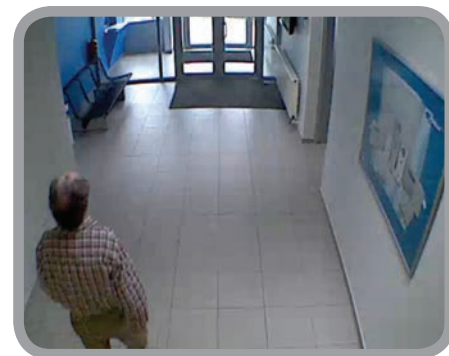
¹ Hardware dependent

Quick and Easy Setup

- Easy setup via the intuitive GUI
 - Licence the software
 - Define the detection area
 - Define the loiter time
- Fine tune with the advanced parameters
- Calibrate the scene for even better performance
- Connect remotely for centralised support

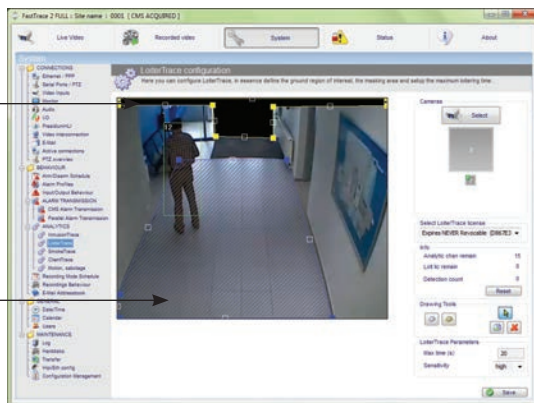


Typical detection scenes



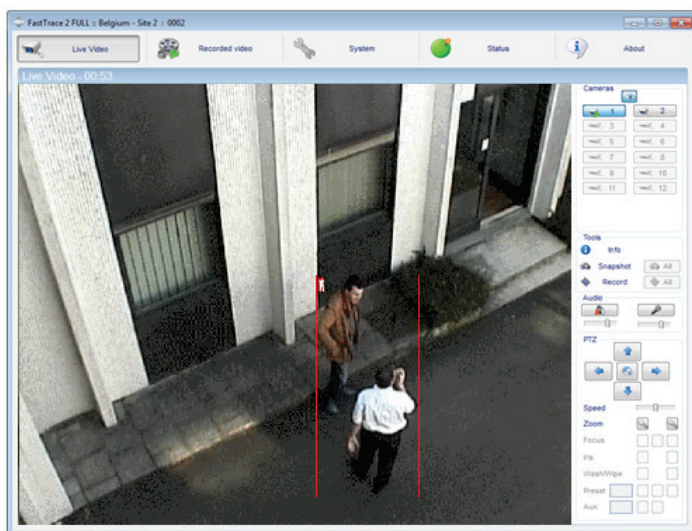
Ability to create polygonal MASKING zones (region of the image which should not be processed e.g. a flashing light, trees, cars, OSD time stamp information, etc).

Polygonal DETECTION zones with selectable loitering sensitivity and time (low, normal, high).



Rapid Verification

- Analytic bounding boxes highlight what caused the alarm
- Live counters show how long someone has been loitering for
- Boxes and counters are available for live and stored video



The LoiterTrace application can be combined with other available ADPRO Video Content Analytic applications (i.e. IntrusionTrace) in any combination up to 32 channels¹ on an ADPRO XO-enabled NVR+ device.

¹ Hardware dependent

www.xtralis.com

UK and Europe +44 1442 242 330 D-A-CH +49 431 23284 1 The Americas +1 781 740 2223

Middle East +962 6 588 5622 Asia +86 21 5240 0077 Australia and New Zealand +61 3 9936 7000

The contents of this document are provided on an "as is" basis. No representation or warranty (either express or implied) is made as to the completeness, accuracy or reliability of the contents of this document. The manufacturer reserves the right to change designs or specifications without obligation and without further notice. Except as otherwise provided, all warranties, express or implied, including without limitation any implied warranties of merchantability and fitness for a particular purpose are expressly excluded.

Xtralis, the Xtralis logo, The Sooner You Know, VESDA-E, VESDA, ICAM, ECO, OSID, HeiTel, ADPRO, IntrusionTrace, LoiterTrace, ClientTrace, SmokeTrace, XOa, XOh, iTrace, iCommand, iRespond, iCommission, iPIR, and FMST are trademarks and/or registered trademarks of Xtralis and/or its subsidiaries in the United States and/or other countries. Other brand names mentioned herein are for identification purposes only and may be trademarks of their respective holder(s). Your use of this document does not constitute or create a licence or any other right to use the name and/or trademark and/or label.

This document is subject to copyright owned by Xtralis. You agree not to copy, communicate to the public, adapt, distribute, transfer, sell, modify or publish any contents of this document without the express prior written consent of Xtralis.

Doc. no. 25889_07