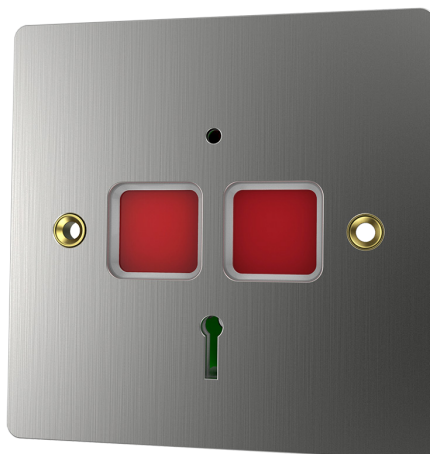


EPA/STD/SS

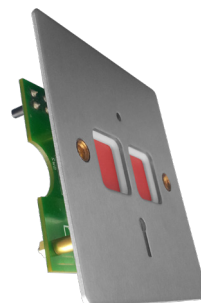
Stainless Steel Flat Plate Panic Button

CQR
First choice for quality

The original electronic Hold-Up Device is now available with a stainless steel flat plate. This is a flush fitting which allows the device be mounted in a standard UK gang box, thanks to its flat face and recessed buttons.



- 8 Terminals
- Double Push
- Flush Fitting
- Stainless Steel
- Fit into a single back box
- Key Resettable
- LED Indicator
- Self Latching
- Front Plate Size 85 x 85 x 1mm



rev. 3-09/2020

Product codes

Code	Description
EPA/STD	Electronic PA Standard
EPA/STD/SS	Flush Electronic PA Stainless Steel

Technical data

Case Material	ABS / Stainless Steel
Connections	8 PCB terminals
Dimensions mm	85mm x 85mm x 28mm (plate thickness 1mm)
Operation	Dual push button
PA Output	N/O or N/C
Reset Method	Key
Voltage	12v DC
Switch Current	45mA @ 12Vdc
Tamper	RFMS (Rear Tamper)
Standards	EN50131-1 Grade 3 & PD6662:2017
Environmental Class	II



 www.cqr.co.uk

 info@cqr.co.uk

 Sales: +(0)151 606 1000 Tech: +(0)151 606 6311

CQR Security Ltd, 125 Pasture Road, Moreton, Wirral, CH46 4TH, UK

