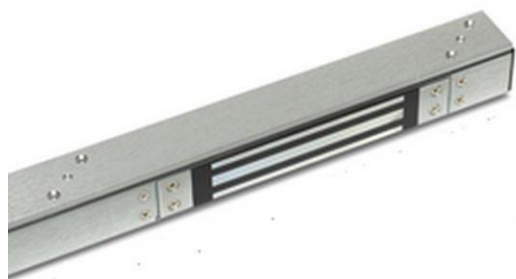


ARCH1M(B)-TP

1m slim architectural housing, complete with maglock



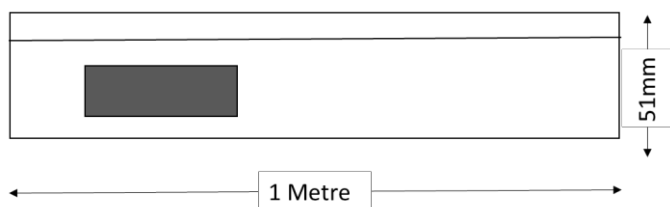
This product is designed for installation above a single doorway where a single maglock with up to 275kg holding force is sufficient. Includes monitored maglock EM00R(B).

Features

- Top plate, maglock, fixings and black plastic end caps included
- Surface mount
- Satin anodised aluminium finish
- Can be cut to required length
- Ideal for outward opening doors
- Enables concealment of cables
- Dual voltage 12Vdc or 24Vdc (selectable)

Technical Information

- 46.5mm x 46.5mm box section with radius edged corners
- Holding force: up to 275kg (600lb)
- Current draw = 500mA @ 12Vdc / 250mA @ 24Vdc
- Operating temp: -10°C to +55°C
- Unmonitored



Related Products

1 MTL



EM300ABP



EM320(B)



ARCH2/2(B)-TP

