

Cabinet Based Poles Gallery ←

Altron Cabinet Based Poles are versatile and robust with the facility for 2 or more compartments therefore making them ideal for multiple use installations - such as CCTV and traffic light mounting.



AW1545/6/DD/UP with gold banding



AW1545/6/DD/UP with gold banding



AW1545/6/300/DD/UP with banding and screw in swan neck

→ Cabinet Based Poles Gallery



AW1545/5/TD/UP



AW1545/8/UP



AW1545/8/UP



AW1545/6/UP in stainless steel



AW2075



AW1545/BAS



AW1545/UP

Altron AW1545 cabinet based camera poles were originally introduced in 1994 as the first CCTV cabinet based pole product. They have been used and specified extensively since then and are now a common feature in urban areas throughout the UK. Ideal for mounting camera equipment within, they provide a cost effective installation and reduce street furniture and clutter. The tilt-down range enables camera equipment to be serviced easily at ground level, without the need for a man lift. Recent developments have been aimed at producing a clean and aesthetic outline, whilst enhancing security, so close fitting flush doors and our heavy duty secure locks are now common across the range.

The AW2075 Cylindrical cabinet based version, with parallel or tapered shafts are popular for installations with an architectural theme.

Altron's numerous security design features ensure a good level of protection against vandal attacks.

→ AW1545/BAS Cabinet Based Pole



AW1545/8/BAS

Fixed height range 4m - 12m
Tilt Down height range 4m - 12m

The 'basic' AW1545 BAS cabinet based pole range offers a cost effective means of mounting CCTV equipment within the one pole structure. More commonly used for industrial and commercial type installations, it does not have venting and high security locks, that come as standard on the UP range, but does offer the other security features common to our cabinet based poles and also the clean, aesthetic appearance, common to the AW1545 ranges and is backed up with a full range of accessories.

Typically used for the following types of installation

- Public area CCTV
- Industrial and commercial premises
- Schools and universities
- Prisons and detention facilities
- Utilities sites
- Railway platforms & car parks
- Car parks
- Retail Parks
- Sports stadia

Security Features

- Internal cabling
- Close fitting flush doors
- Solid secure heavy duty door locks
- Internal padlock facility on tilt down poles to protect against un-authorised lowering

General Features

- Stable structures for all camera types
- Available in 6 standard cabinet sizes, 300, 350, 400, 450, 500 and 600 square (350mm square as standard if not specified)
- Flush fitting door, level with cabinet surface, no external frame combined with flush fitting Altron secure locks giving enhanced security and a clean aesthetic appearance
- Treated wooden backboard within cabinet
- 4 point security door locking option
- Demountable winches allow for a secure installation whilst also reducing costs on multiple installations
- A wide range of standard Altron Accessories and Brackets available
- Pole adaptations available to suit customers/project specific requirements
- Constructed in high tensile steel and hot dip galvanised after fabrication for durability
- Option of painting over the galvanised finish in colours available from BS and RAL colour charts
- For design, manufacturing and finishing standards, see details on page 107



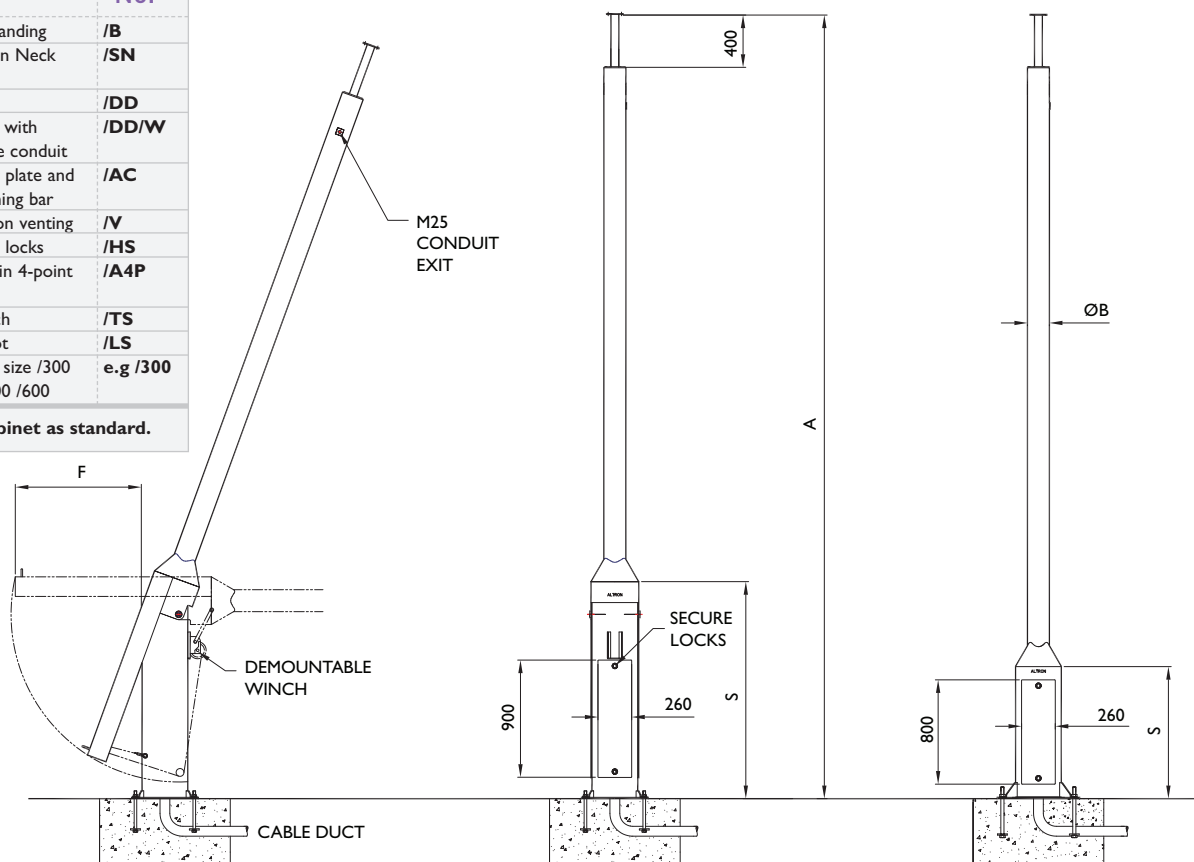
AW1545/6TD/BAS in tilted position

AW1545/BAS Cabinet Based Pole Technical Specification ←

Options	PT No.
Decorative banding	/B
Screw in Swan Neck adaptor	/SN
Double door	/DD
Double door with washer bottle conduit	/DD/W
Access cover plate and cable restraining bar	/AC
Full convection venting	/V
High security locks	/HS
Altron locks in 4-point arrangement	/A4P
Tamper switch	/TS
Lighting spigot	/LS
Cabinet base size /300 /400 /450 /500 /600	e.g /300
350mm² cabinet as standard.	

AW1545BAS TD

AW1545BAS



Pole is fixed in the vertical position using 2 no. bolts and locked with internal nuts - has the facility to be padlocked internally to stop unauthorised tilting.

Poles complete with treated equipment mounting board inside compartment. Earthing lugs within pole & on door

All camera mounting plates are Ø 127 with 8 No Ø 8.5 equi-spaced on 101.6 PCD. Ø 40 thro' column spacer

FOR FOUNDATION AND BOLTING DETAILS REFER TO PAGE 41

Model No.	Height in mtrs A	Max equip weight at top kgs	Max equip surface area m ²	Pole ØB	Cabinet height above ground S	Pole rear clearance when tilting F	Winch part number	Product weight kgs
AW1545BAS-Fixed								
AW1545/4/BAS	4	40	0.25	168	1000	-	-	153
AW1545/5/BAS	5	40	0.25	168	1000	-	-	175
AW1545/6/BAS	6	40	0.25	168	1000	-	-	197
AW1545/7/BAS	7	40	0.25	168	1000	-	-	219
AW1545/8/BAS	8	40	0.25	168	1000	-	-	251
AW1545/8HD/BAS	8	50	0.5	193	1300	-	-	341
AW1545/9/BAS	9	40	0.25	193	1300	-	-	371
AW1545/10/BAS	10	40	0.25	193	1300	-	-	401
AW1545/12/BAS	12	40	0.25	193	1300	-	-	462
AW1545BAS TD-Tilt Down								
AW1545/4TD/BAS	4	40	0.25	168	1700	1150	DW1000/45	236
AW1545/6TD/BAS	6	30	0.25	168	1700	1150	DW1000/45	280
AW1545/8TD/BAS	8	25	0.25	168	1700	1150	DW1500/45	334
AW1545/10TD/BAS	10	40	0.25	193	2850	2150	DW2500/45	592
AW1545/12TD/BAS	12	25	0.25	193	2850	2150	DW2500/45	643

Accessories	
Top mounting brackets for Fixed and PTZ cameras	P76
Swanneck brackets for Dome cameras	P81
Anti-climb guards	P77
Clamp-on camera mounting brackets	P79
Telemetry box mounting brackets	P77
Pole top mounting cages	P83
PIR mounting ring	P84

Quick reference	
Single fixed camera knuckle	PTS-I
Twin fixed camera bracket	TB2-600F
Half swanneck for dome	AW1699H
Full swanneck for dome	AW1699F
Anti climb guard	SGC
PIR mounting ring	AW1962
Telemetry bracket	ATBP

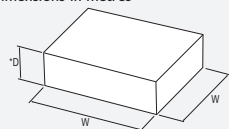
Where payloads are greater than those stated above, please contact Altron
All dimensions in mm unless stated otherwise

→ Cabinet Based Poles Foundations & Bolting Details

MODEL NO.	HEIGHT MTRS	BOLT CENTRES I ²	BASE PLATE SIZE H ²	BURIED DEPTH 'D'	SERVICE ENTRY SIZE	HOLDING DOWN BOLT SIZE D X L	FOUNDATION SIZES FOR THE UK					
							COUNTRY LOCATION			TOWN LOCATION		
							AREA A	AREA B	AREA C	AREA A	AREA B	AREA C
AW1545/UP												
Fixed cabinet based pole. Standard cabinet base size of 400mm ²												
AW1545/4	4	550	630	200	370x370	M24x325	0.9 x 0.9 x 0.5	0.9 x 0.9 x 0.5	1.0 x 1.0 x 0.5	0.9 x 0.9 x 0.5	0.9 x 0.9 x 0.5	0.9 x 0.9 x 0.5
AW1545/5	5	550	630	200	370x370	M24x325	1.0 x 1.0 x 0.5	1.1 x 1.1 x 0.55	1.1 x 1.1 x 0.55	0.9 x 0.9 x 0.5	1.0 x 1.0 x 0.5	1.0 x 1.0 x 0.5
AW1545/6	6	550	630	200	370x370	M24x325	1.1 x 1.1 x 0.55	1.1 x 1.1 x 0.55	1.2 x 1.2 x 0.6	1.0 x 1.0 x 0.5	1.1 x 1.1 x 0.55	1.1 x 1.1 x 0.55
AW1545/7	7	550	630	200	370x370	M24x325	1.1 x 1.1 x 0.55	1.2 x 1.2 x 0.6	1.3 x 1.3 x 0.65	1.1 x 1.1 x 0.55	1.1 x 1.1 x 0.55	1.2 x 1.2 x 0.6
AW1545/8	8	550	630	200	370x370	M24x425	1.2 x 1.2 x 0.6	1.3 x 1.3 x 0.65	1.3 x 1.3 x 0.65	1.2 x 1.2 x 0.6	1.2 x 1.2 x 0.6	1.3 x 1.3 x 0.65
AW1545/8/HD	8	550	630	200	370x370	M24x425	1.4 x 1.4 x 0.7	1.4 x 1.4 x 0.7	1.5 x 1.5 x 0.75	1.3 x 1.3 x 0.65	1.4 x 1.4 x 0.7	1.4 x 1.4 x 0.7
AW1545/9	9	550	630	200	370x370	M24x425	1.3 x 1.3 x 0.65	1.4 x 1.4 x 0.7	1.4 x 1.4 x 0.7	1.2 x 1.2 x 0.6	1.3 x 1.3 x 0.65	1.4 x 1.4 x 0.7
AW1545/10	10	550	630	200	370x370	M24x425	1.4 x 1.4 x 0.7	1.5 x 1.5 x 0.75	1.6 x 1.6 x 0.8	1.3 x 1.3 x 0.65	1.4 x 1.4 x 0.7	1.5 x 1.5 x 0.75
AW1545/10/HD	10	700	800	200	470x470	M27x600	1.6 x 1.6 x 0.8	1.7 x 1.7 x 0.9	1.8 x 1.8 x 0.9	1.5 x 1.5 x 0.75	1.6 x 1.6 x 0.8	1.7 x 1.7 x 0.9
AW1545/12	12	700	800	200	470x470	M27x600	1.6 x 1.6 x 0.8	1.7 x 1.7 x 0.9	1.8 x 1.8 x 0.9	1.5 x 1.5 x 0.75	1.6 x 1.6 x 0.8	1.7 x 1.7 x 0.9
AW1545/15	15	700	800	200	470x470	M27x600	1.9 x 1.9 x 1.0	2.0 x 2.0 x 1.0	2.1 x 2.1 x 1.0	1.8 x 1.8 x 0.9	1.9 x 1.9 x 1.0	2.0 x 2.0 x 1.0
AW1545/UP/TD												
Tilt-down cabinet based pole. Standard cabinet base size of 400mm ²												
AW1545/4TD	4	550	630	75	370x370	M24x325	1.0 x 1.0 x 0.5	1.0 x 1.0 x 0.5	1.1 x 1.1 x 0.55	0.9 x 0.9 x 0.5	0.9 x 0.9 x 0.5	1.0 x 1.0 x 0.5
AW1545/6TD	6	550	630	75	370x370	M24x325	1.1 x 1.1 x 0.55	1.2 x 1.2 x 0.6	1.3 x 1.3 x 0.65	1.1 x 1.1 x 0.55	1.1 x 1.1 x 0.55	1.2 x 1.2 x 0.6
AW1545/8TD	8	550	630	75	370x370	M24x425	1.3 x 1.3 x 0.65	1.3 x 1.3 x 0.65	1.4 x 1.4 x 0.7	1.2 x 1.2 x 0.6	1.3 x 1.3 x 0.65	1.3 x 1.3 x 0.65
AW1545/10TD	10	550	630	200	370x370	M24x425	1.4 x 1.4 x 0.7	1.5 x 1.5 x 0.75	1.6 x 1.6 x 0.8	1.3 x 1.3 x 0.65	1.4 x 1.4 x 0.7	1.5 x 1.5 x 0.75
AW1545/12TD	12	550	630	200	370x370	M24x425	1.6 x 1.6 x 0.8	1.7 x 1.7 x 0.9	1.8 x 1.8 x 0.9	1.5 x 1.5 x 0.75	1.6 x 1.6 x 0.8	1.7 x 1.7 x 0.9
AW1545/BAS												
Fixed cabinet based pole. Standard cabinet base size of 350mm ²												
AW1545/4	4	450	510	N/A	330x330	M20x325	0.9 x 0.9 x 0.5	0.9 x 0.9 x 0.5	1.0 x 1.0 x 0.5	0.9 x 0.9 x 0.5	0.9 x 0.9 x 0.5	0.9 x 0.9 x 0.5
AW1545/5	5	450	510	N/A	330x330	M20x325	1.0 x 1.0 x 0.5	1.1 x 1.1 x 0.55	1.1 x 1.1 x 0.55	0.9 x 0.9 x 0.5	1.0 x 1.0 x 0.5	1.0 x 1.0 x 0.5
AW1545/6	6	450	510	N/A	330x330	M20x325	1.1 x 1.1 x 0.55	1.1 x 1.1 x 0.55	1.2 x 1.2 x 0.6	1.0 x 1.0 x 0.5	1.1 x 1.1 x 0.55	1.1 x 1.1 x 0.55
AW1545/7	7	450	510	N/A	330x330	M20x325	1.1 x 1.1 x 0.55	1.2 x 1.2 x 0.6	1.3 x 1.3 x 0.65	1.1 x 1.1 x 0.55	1.1 x 1.1 x 0.55	1.2 x 1.2 x 0.6
AW1545/8	8	550	630	N/A	330x330	M24x425	1.2 x 1.2 x 0.6	1.3 x 1.3 x 0.65	1.3 x 1.3 x 0.65	1.2 x 1.2 x 0.6	1.2 x 1.2 x 0.6	1.3 x 1.3 x 0.65
AW1545/8/HD	8	550	630	N/A	330x330	M24x425	1.4 x 1.4 x 0.7	1.4 x 1.4 x 0.7	1.5 x 1.5 x 0.75	1.3 x 1.3 x 0.65	1.4 x 1.4 x 0.7	1.4 x 1.4 x 0.7
AW1545/9	9	550	630	N/A	330x330	M24x425	1.3 x 1.3 x 0.65	1.4 x 1.4 x 0.7	1.5 x 1.5 x 0.75	1.3 x 1.3 x 0.65	1.3 x 1.3 x 0.65	1.4 x 1.4 x 0.7
AW1545/10	10	550	630	N/A	330x330	M24x425	1.4 x 1.4 x 0.7	1.4 x 1.4 x 0.7	1.5 x 1.5 x 0.75	1.3 x 1.3 x 0.65	1.4 x 1.4 x 0.7	1.4 x 1.4 x 0.7
AW1545/12	12	550	630	N/A	330x330	M24x425	1.6 x 1.6 x 0.8	1.7 x 1.7 x 0.9	1.8 x 1.8 x 0.9	1.4 x 1.4 x 0.7	1.6 x 1.6 x 0.8	1.7 x 1.7 x 0.9
AW1545/BAS/TD												
Tilt-down cabinet based pole. Standard cabinet base size of 350mm ²												
AW1545/4TD	4	450	510	75	330x330	M20x325	1.0 x 1.0 x 0.5	1.0 x 1.0 x 0.5	1.1 x 1.1 x 0.55	0.9 x 0.9 x 0.5	0.9 x 0.9 x 0.5	1.0 x 1.0 x 0.5
AW1545/6TD	6	450	510	75	330x330	M20x325	1.1 x 1.1 x 0.55	1.2 x 1.2 x 0.6	1.3 x 1.3 x 0.65	1.1 x 1.1 x 0.55	1.1 x 1.1 x 0.55	1.2 x 1.2 x 0.6
AW1545/8TD	8	550	630	75	330x330	M24x425	1.3 x 1.3 x 0.65	1.3 x 1.3 x 0.65	1.4 x 1.4 x 0.7	1.2 x 1.2 x 0.6	1.3 x 1.3 x 0.65	1.3 x 1.3 x 0.65
AW1545/10TD	10	550	630	200	330x330	M24x425	1.4 x 1.4 x 0.7	1.5 x 1.5 x 0.75	1.6 x 1.6 x 0.8	1.3 x 1.3 x 0.65	1.4 x 1.4 x 0.7	1.5 x 1.5 x 0.75
AW1545/12TD	12	550	630	200	330x330	M24x425	1.5 x 1.5 x 0.75	1.6 x 1.6 x 0.8	1.7 x 1.7 x 0.9	1.4 x 1.4 x 0.75	1.5 x 1.5 x 0.75	1.6 x 1.6 x 0.8
AW2075 - AW2075/TD												
both fixed and tilt-down poles have a Ø457mm cabinet base only.												
AW2075/4	4	450	510	200	Ø420	M20x325	0.9 x 0.9 x 0.5	0.9 x 0.9 x 0.5	1.0 x 1.0 x 0.5	0.9 x 0.9 x 0.5	0.9 x 0.9 x 0.5	0.9 x 0.9 x 0.5
AW2075/6	6	450	510	200	Ø420	M20x325	1.1 x 1.1 x 0.55	1.1 x 1.1 x 0.55	1.2 x 1.2 x 0.6	1.0 x 1.0 x 0.5	1.1 x 1.1 x 0.55	1.1 x 1.1 x 0.55
AW2075/8	8	550	630	200	Ø420	M24x425	1.2 x 1.2 x 0.6	1.3 x 1.3 x 0.65	1.4 x 1.4 x 0.7	1.2 x 1.2 x 0.6	1.2 x 1.2 x 0.6	1.3 x 1.3 x 0.65
AW2075/10	10	550	630	200	Ø420	M24x425	1.4 x 1.4 x 0.7	1.5 x 1.5 x 0.75	1.6 x 1.6 x 0.8	1.3 x 1.3 x 0.65	1.4 x 1.4 x 0.7	1.5 x 1.5 x 0.75

Table dimensions in mm

Foundation sizes in table are W x V x D
Dimensions in metres



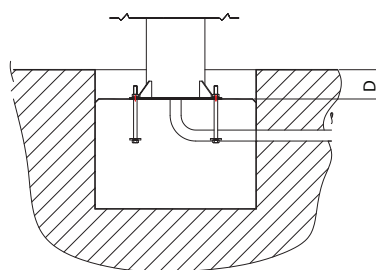
*D= 1000 on PM and buried
flange/embedded base models

Base plate and bolt sizes are for the standard cabinet sizes shown. For other cabinet sizes please contact our technical department for confirmation of sizes.

- For area D locations and exposed locations over 100m above sea level for areas A, B and 150m above sea level for area C, we recommend increased foundation sizes. Please refer to the table on page 101 for conformation of these.
- A minimum soil bearing capacity of 75 kN/m² is assumed.
- Foundation base dimensions are typical and may vary depending on site conditions.
- Please refer to the foundations & windloading section on pages 101-103 for further guidance.

REFER TO INSTALLATION METHODS ON PAGES 104-106

BURIED DEPTH BELOW GROUND LEVEL



GALVANISED HOLDING DOWN BOLTS

