

→ Wall Mounted Poles

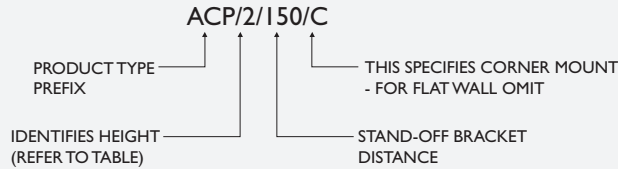


Ideal for gaining an elevated viewpoint from existing structures, we offer a range of wall and parapet mounted products, both fixed and tilt-down to suit most applications. Many are available from stock and where a standard product does not suit, we provide variations on short lead times.

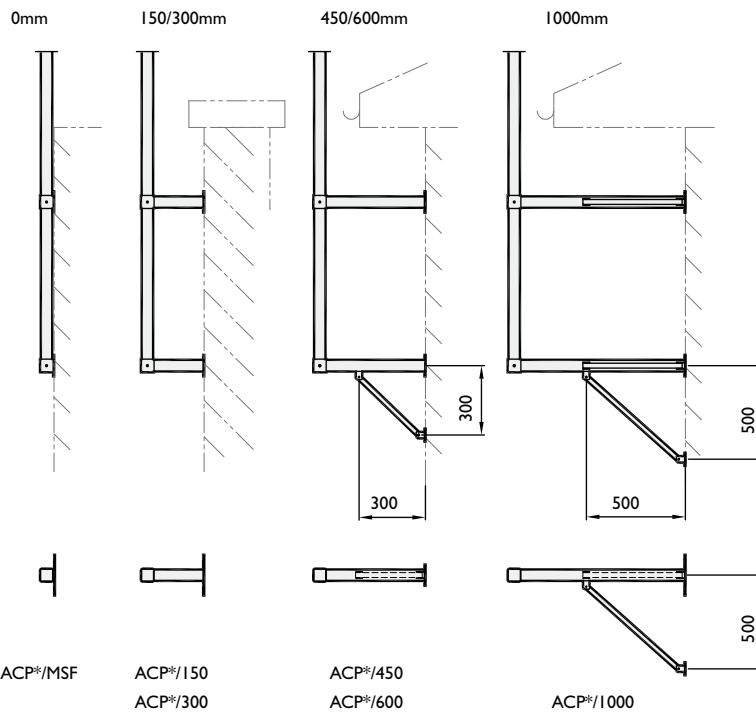
ACP Wall Mounted Poles

Ideal for gaining an elevated view point from existing structures.

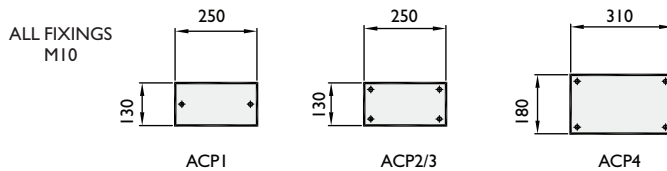
ACP Part Numbering



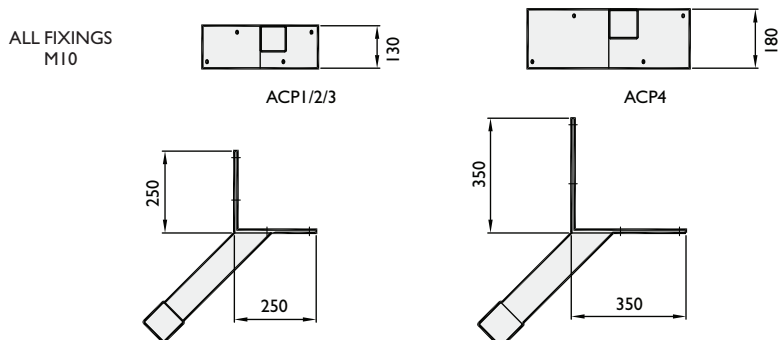
Stand-Off Bracket Options



Wall Plate Details



Corner Mount Bracket Details



Features

- o Poles up to 6m shipped on carrier for overnight delivery
- o Rigid construction
- o Hot dip galvanised for longevity
- o Full range of accessories available

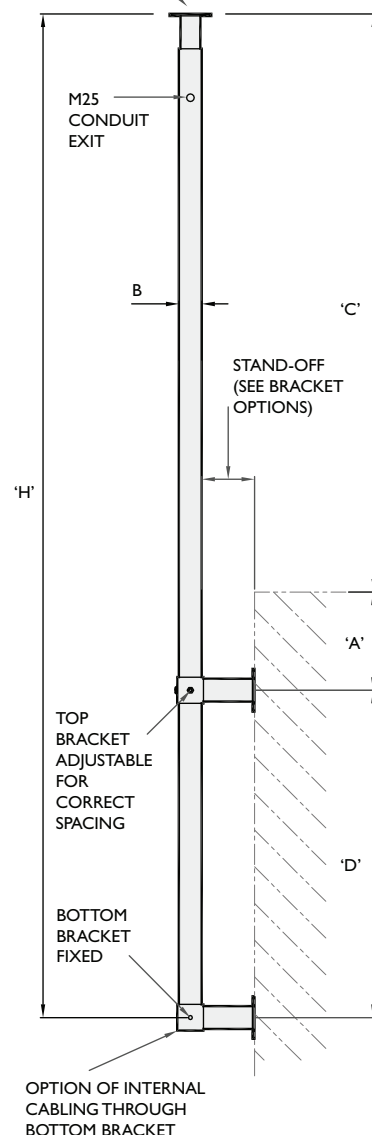
Model Number	H	B	A	C	D
ACP1	3m	70 ²	0.3m	1.7m	1m
ACP2	4m	80 ²	0.3m	2.2m	1.5m
ACP3	5m	80 ²	0.4m	2.6m	2m
ACP4	6m	90 ²	0.5m	3.5m	2m

• All variations held in stock

- o Dimension 'A' to be maintained for upper bracket fixing strength
- o Dimension 'D' to be maintained for camera stability

PTZ MOUNTING PLATE WITH 8 No. ø8.5 HOLES EQUI-SPACED ON A ø101.6 PCD.

**Max headload
25 kgs - 0.25m²**



→ Tilt-Down Wall Mounted Poles

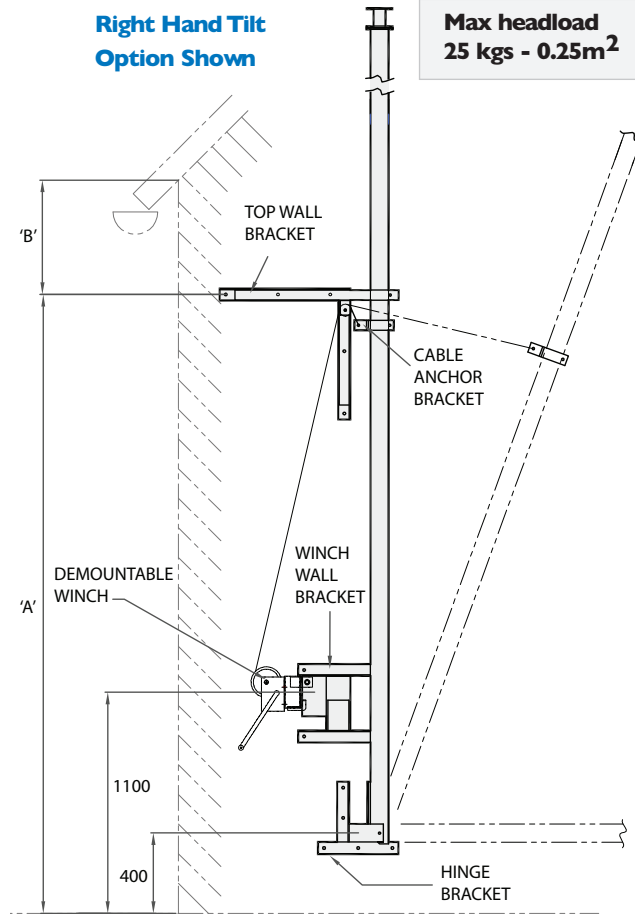
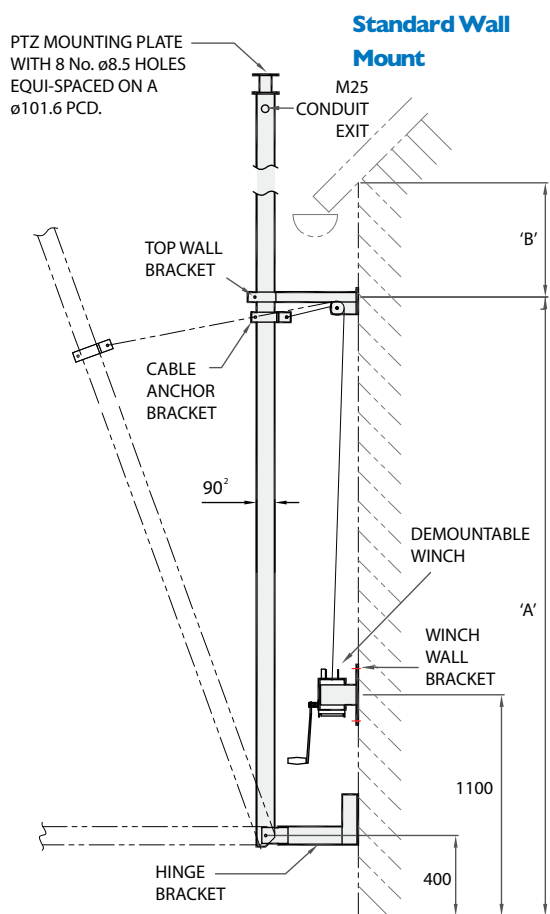
Features of Wall Mounted Tilt-Down Poles

Altron Tilt-down wall mounted poles offer a solution to virtually any location and head load where a tilt-down wall mounted pole is suitable, for gaining an elevated viewpoint from an existing structure. Bespoke mounting brackets can be provided to suit site specific requirements.

- o Comprehensive standard range to suit most applications
- o All Altron standard accessories available
- o Hot dip galvanised for longevity
- o Bespoke fixing brackets for non-standard situations

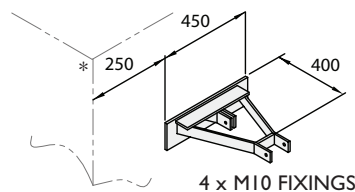
AW1934 Wall Mounted Tilt-Down Poles

For single or two storey walls, giving a cost effective solution. Demountable winches are included for added security.

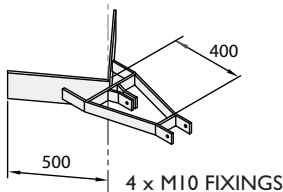


Mounting Bracket Options

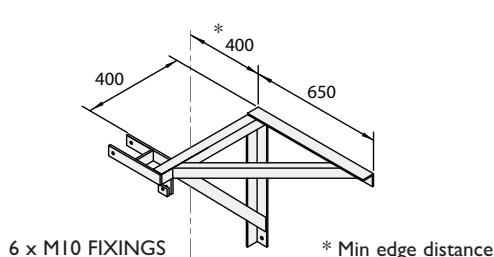
Wall Mount



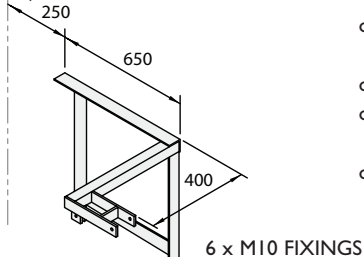
Corner Mount



Left Hand Tilt



Right Hand Tilt



Pole Height	Part No.	Dim A		B min
		min	max	
3	AW1934/3	1.5	2.5m	0.3m
4	AW1934/4	2	4m	0.3m
5	AW1934/5	2.5	4m	0.4m
6	AW1934/6	3	5m	0.4m
7	AW1934/7	3.5	6m	0.5m
8	AW1934/8	4	7 m	0.5m

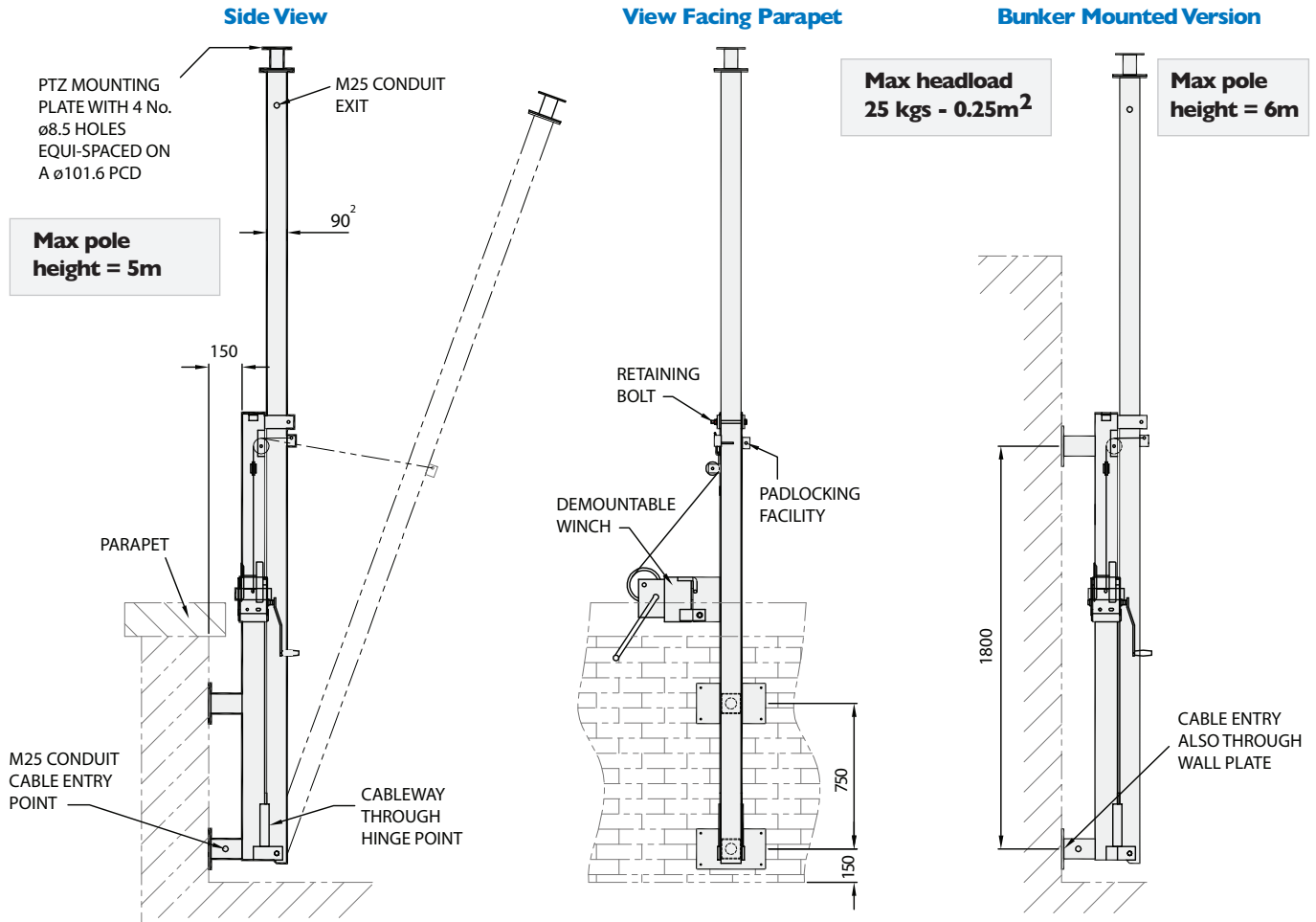
• Stock items

- o For left hand tilt & right hand tilt suffix part number /LHT or /RHT e.g AW1934/4/LHT
- o For corner mount suffix part number /C
- o Dimension 'A' to be maintained for camera stability and to limit winch loading
- o Dimension 'B' to be maintained for upper bracket fixing strength

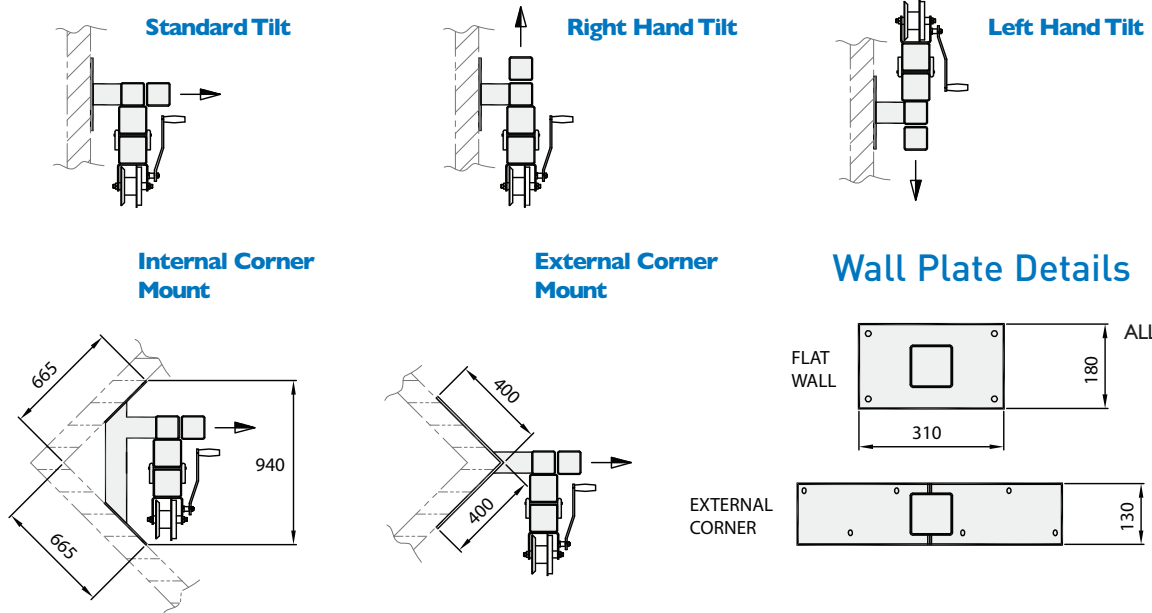
Tilt-Down Wall Mounted Poles ←

AW1980 Parapet Mounted Tilt-Down Poles

AW1980 parapet mounted tilt-down poles, give additional height from a standard parapet of suitable construction. Demountable winches and the facility to padlock make this product suitable for public areas, such as multi-storey car park roof levels. A roof 'bunker' mounted version is also available.



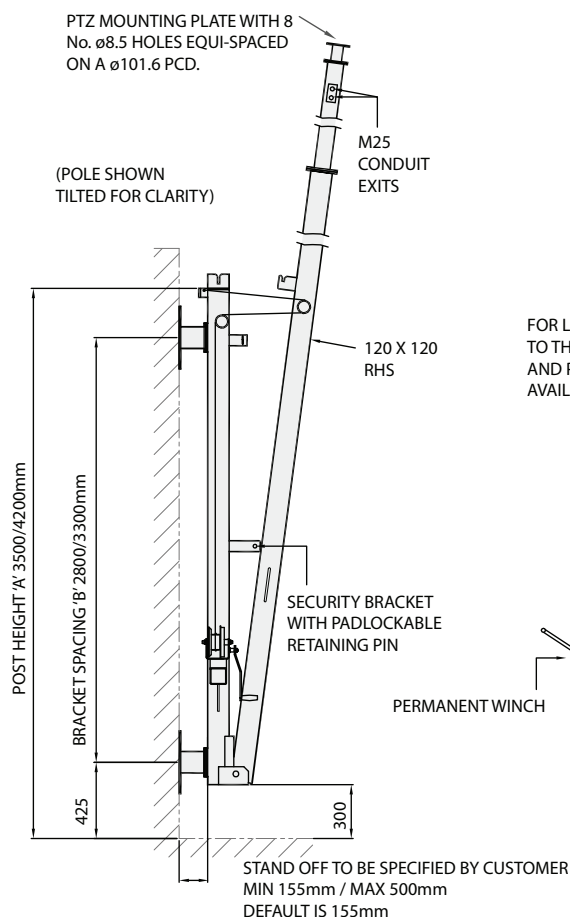
Mounting Bracket Options



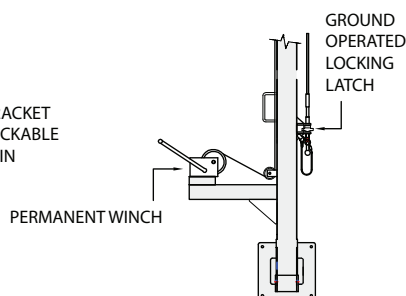
→ Tilt-Down Wall Mounted Poles

AW4772 High Loading Wall-Mounted Tilt-Down Pole

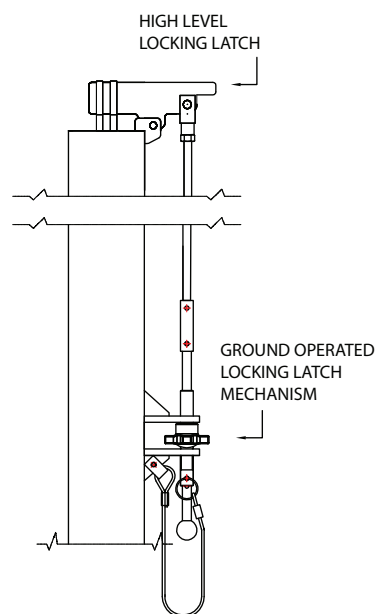
Typically for dual camera and lighting installations, this range can be operated safely without the need to access a high level locking bolt, utilising a high level latch operated from ground level. Winches are fixed and can be supplied with padlockable cover and cable guard.



FOR LOCATIONS ACCESSIBLE TO THE PUBLIC, CABLE GUARD AND PADLOCKABLE WINCH COVER AVAILABLE AS OPTIONAL EXTRA



Uplatch Detail



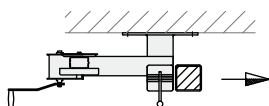
Guidance for Equipment Loading

Total Height (m)	Part No.	Wind surface area of equipment	Weight of equipment (kgs)	Post height 'A'	Bracket spacing 'B'
4	AW4772/4	0.75 m ²	75	3500 mm	2800 mm
5	AW4772/5	0.75 m ²	75	3500 mm	2800 mm
6	AW4772/6	0.65 m ²	70	4200 mm	3300 mm
7	AW4772/7	0.5 m ²	55	4200 mm	3300 mm
8	AW4772/8	0.4 m ²	40	4200 mm	3300 mm

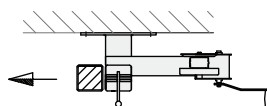
- For left hand tilt & right hand tilt suffix part number /LHT or /RHT e.g AW4772/5/LHT
- For corner mount suffix part number /C
- Bracket spacing can be altered to suit site conditions depending on suitability of structure
- Optional winch cable guard (not a retrofit item)
- Optional padlockable winch housing

Mounting Bracket Options

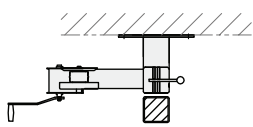
Right Hand Tilt



Left Hand Tilt

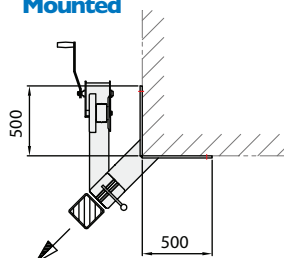


Standard Wall Mounted

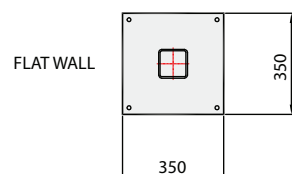


*ALSO AVAILABLE WITH RIGHT HAND WINCH MOUNTING

Standard Corner Mounted



Wall Plate Details



ALL FIXINGS
M12

