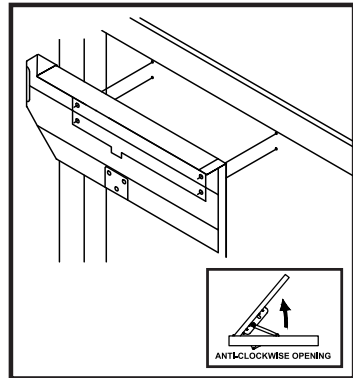
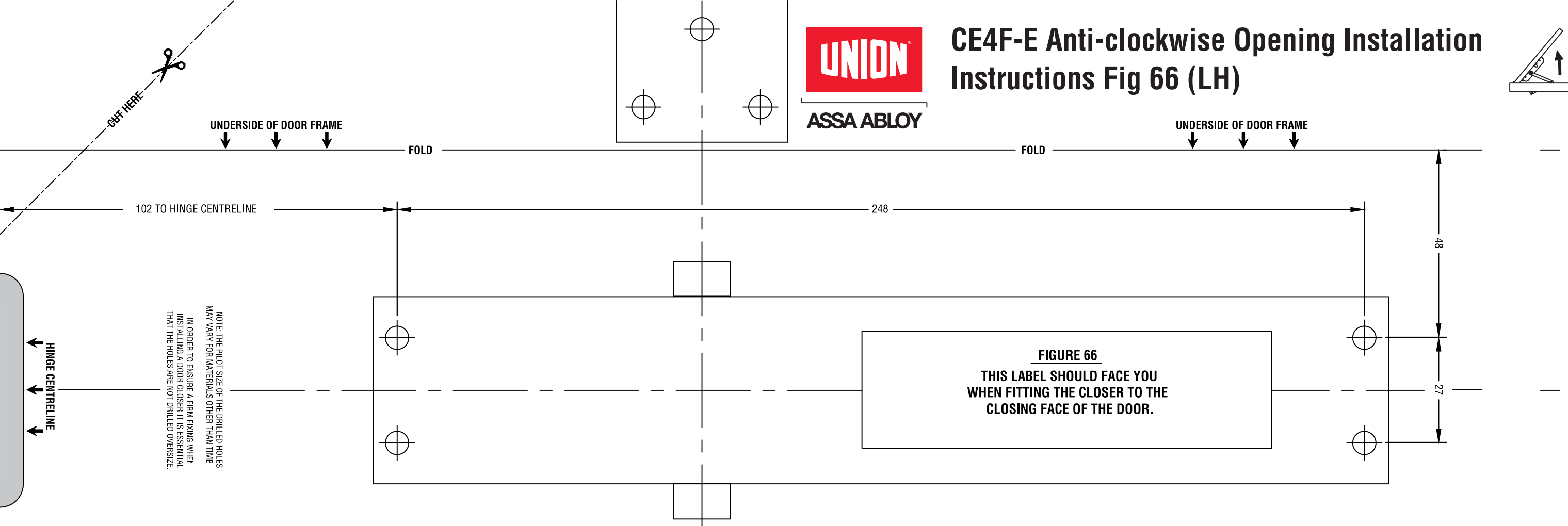
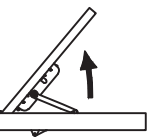


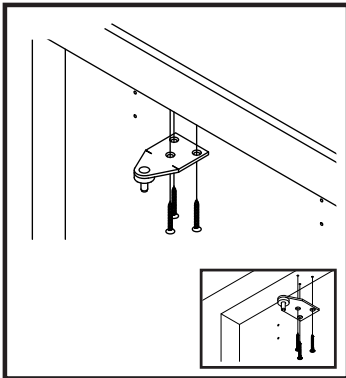


ASSA ABLOY

CE4F-E Anti-clockwise Opening Installation Instructions Fig 66 (LH)



1 Fit template to door, mark holes then remove template.

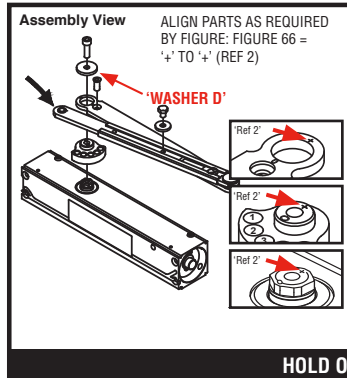


2 Fit figure 66 bracket using 3-off screws (B).

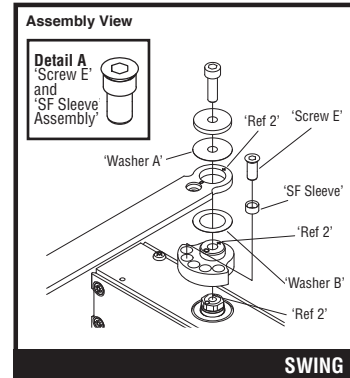
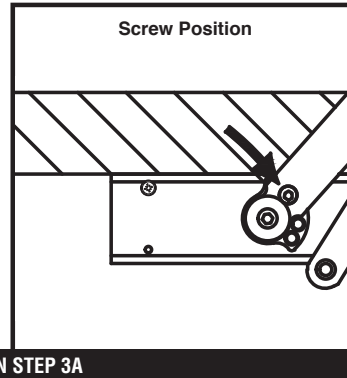
To fit in Hold Open mode,
follow steps 3A and 4A.

To fit in Swing Free mode,
follow steps 3B and 4B.

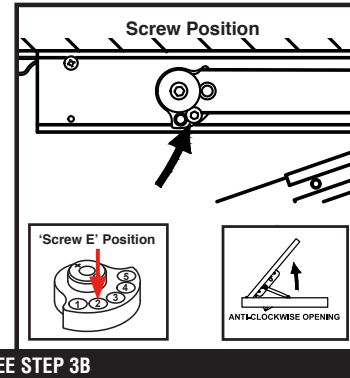
Then proceed to step 5.



HOLD OPEN STEP 3A



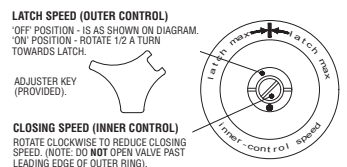
SWING FREE STEP 3B



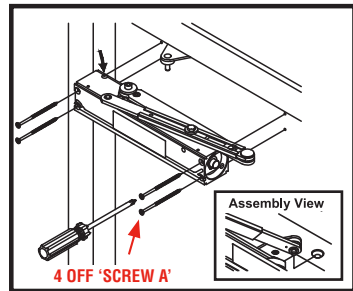
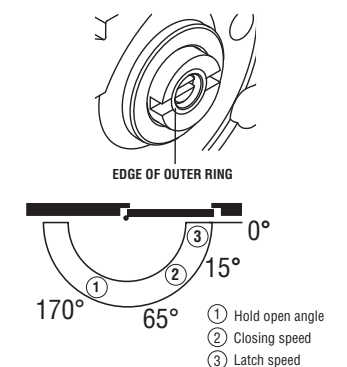
Closer Adjustment

Please follow below instructions to change the latch & closing speed of your door closer. Note that adjustments can be made with the tool (see opposite) provided within the door closer box.

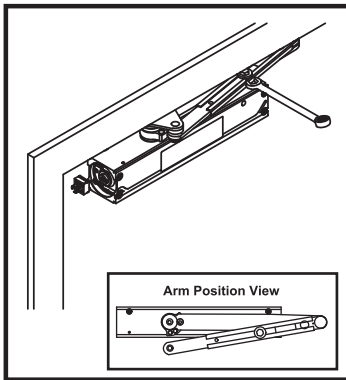
- EN1155
- Power Size 4
- 1100mm / 80KG



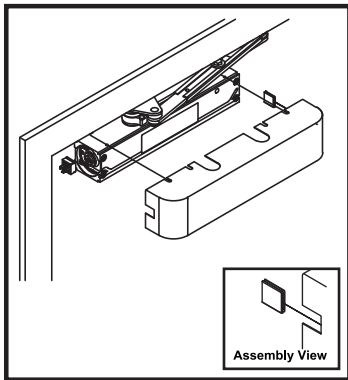
3D ADJUSTMENT END VIEW



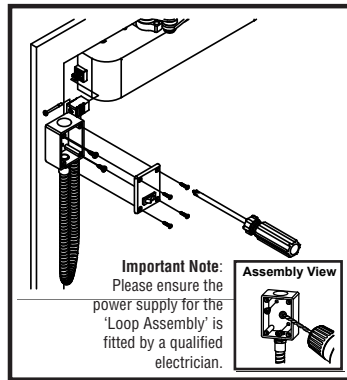
4 • To aid installation turn the speed valve clockwise to close. Do not overtighten.
• Move the 'Fixed Arm Assembly' so that it is aligned with the centreline of the 'Closer Body' (see Step 6 'Arm Position View').
• Ensure that 2 x 'Screw G' are fixed into the correct holes, then fix the 'Closer Body' to the door.
• Ensure the 'Closer Body' is flush & level on the door.
• Fix the 'Fixed Arm Assembly' to the 'Figure 66 Bracket' using the 'Capped Circlip' (see assembly view).



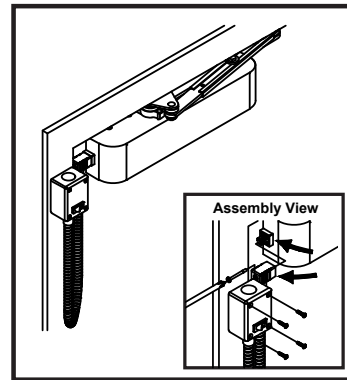
5 • Ensure the 'Fixed Arm Assembly' is still aligned with the 'Closer Body' and not touching/pressing on the door surface.
• Hold in place by tightening the 'Arm Bolt' with a 10mm spanner, until the 'Arm Bolt' is tightened firmly so the 'Moveable Arm' cannot move.
• Then turn the speed valve anti-clockwise so that the door closes at the desirable speed.



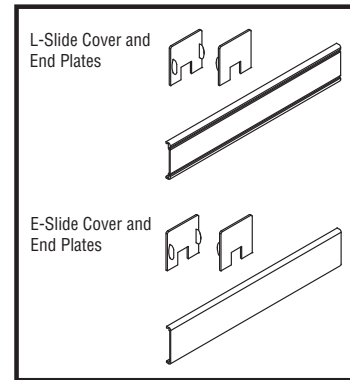
6 • Ensure the 'Cover Grommet' and 'Base Connector' are pushed into the 'Radius Cover'.
• Slide the 'Radius Cover' over the body locating onto both 'Screw G'.
• Tighten both 'Screw G' so that the cover does not move.



7 • Remove the 'Switch Box' screws and adapt the box (see assembly view) to suit the 24V DC (at 100mA \pm 10%) power supply.
• Connect the power supply and fix the 'Switch Box' to the wall using 2 x 'Screw F' (see assembly view).
• Ensure the location of the 'Switch Box' does not hinder operation.

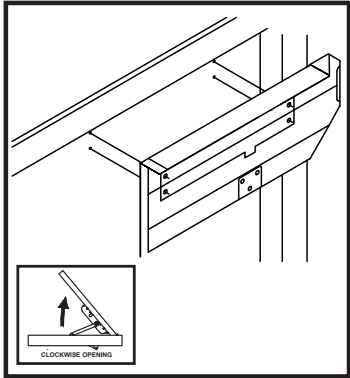
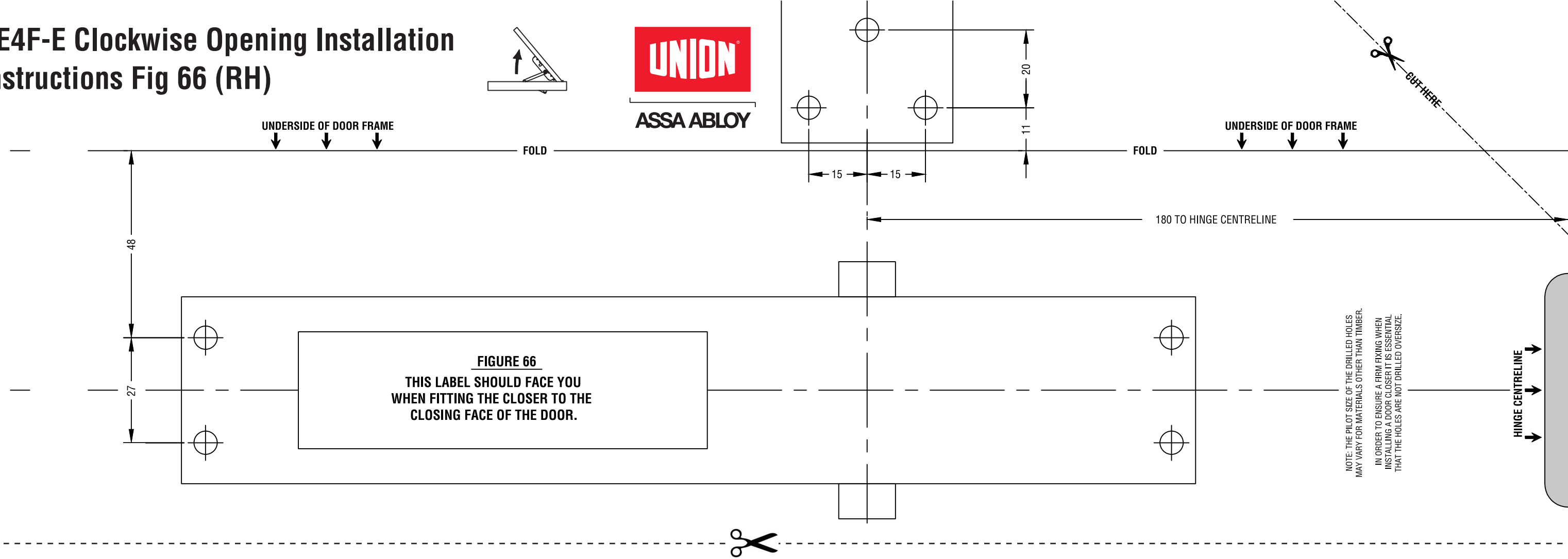


8 • Re-assemble the 'Switch Box' ensuring the power is connected correctly.
• Then insert the 'Loop Assembly' into the 'Base Connector' (arrows on diagram).
• Ensure 'Screw C' is securely in place.

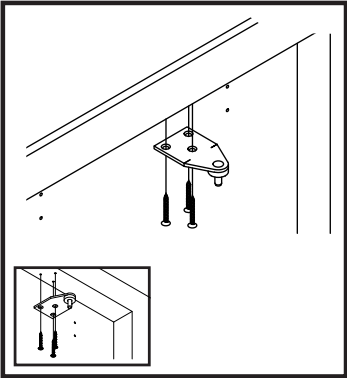


If using optional slide cover: Slide cover on to front of closer and clip in end plates.

CE4F-E Clockwise Opening Installation Instructions Fig 66 (RH)



1 Fit template to door, mark holes then remove template.

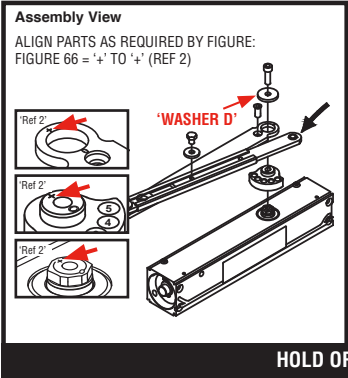


2 Fit figure 66 bracket using 3-off screws (B).

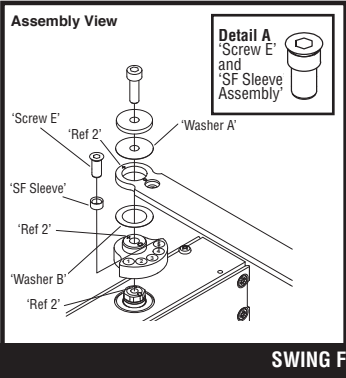
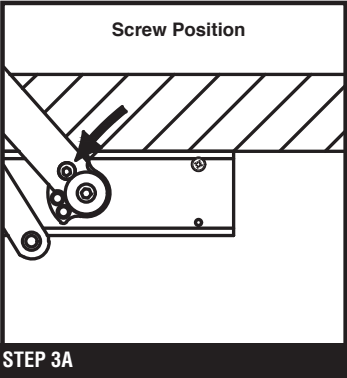
To fit in Hold Open mode, follow steps 3A and 4A.

To fit in Swing Free mode, follow steps 3B and 4B.

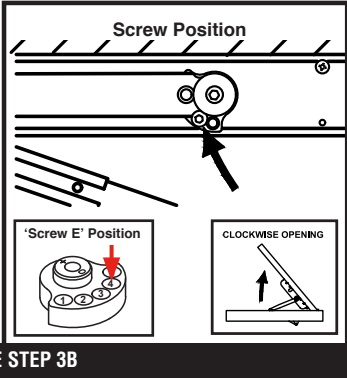
Then proceed to step 5.



- 3A • Ensure that 'Screw E' is in the correct hole (see arrow on position view).
- Slide the 'Moveable Arm' into the larger 'Fixed Arm Assembly'.
 - Ensure that the '+' symbols on the closer pivot and 'Arm Adaptor' align.
 - Leave the Arm Bolt' loose as this will aid installation.



- 3B • Ensure that 'Screw E' is in the correct hole (hole 4 - see arrow on position view) ensuring 'Screw E' sits within the 'SF Sleeve' as detail A.
- Slide the 'Moveable Arm' into the larger 'Fixed Arm Assembly'.
 - Leave the Arm Bolt' loose as this will aid installation.
 - Ensure that the '+' symbols on the closer pivot and 'Arm Adaptor' align.



Closer Adjustment

Please follow below instructions to change the latch & closing speed of your door closer. Note that adjustments can be made with the tool (see opposite) provided within the door closer box.

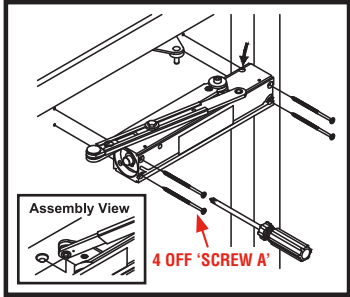
- EN1155
- Power Size 4
- 1100mm / 80KG

LATCH SPEED (OUTER CONTROL)
OFF POSITION - IS AS SHOWN ON DIAGRAM.
ON POSITION - ROTATE 1/2 A TURN TOWARDS LATCH.

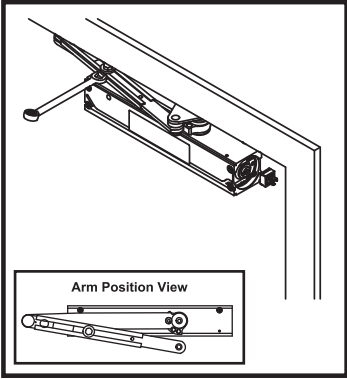
CLOSING SPEED (INNER CONTROL)
ROTATE CLOCKWISE TO REDUCE CLOSING SPEED. (NOTE: DO NOT OPEN VALVE PAST LEADING EDGE OF OUTER RING).

3D ADJUSTMENT END VIEW

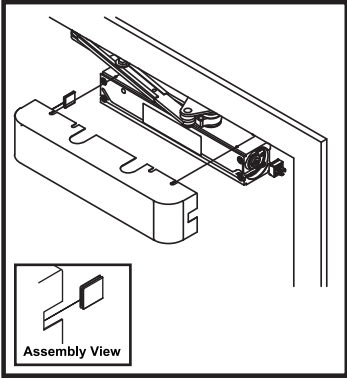
1 Hold open angle
2 Closing speed
3 Latch speed



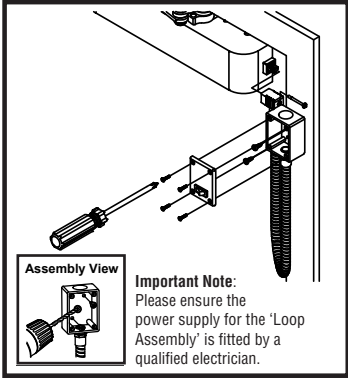
- 4 • To aid installation turn the speed valve clockwise to close. Do not overtighten.
- Move the 'Fixed Arm Assembly' so that it is aligned with the centreline of the 'Closer Body' (see Step 6 'Arm Position View').
 - Ensure that 2 x 'Screw G' are fixed into the correct holes, then fix the 'Closer Body' to the door.
 - Ensure the 'Closer Body' is flush & level on the door.
 - Fix the 'Fixed Arm Assembly' to the 'Figure 66 Bracket' using the 'Capped Circlip' (see assembly view).
 - Fix the closer body to the door with 4 x 'Screw A'.



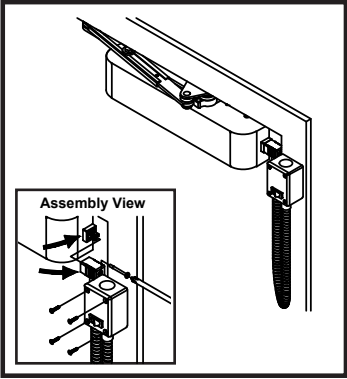
- 5 • Ensure the 'Fixed Arm Assembly' is still aligned with the 'Closer Body' and not touching/pressing on the door surface.
- Hold in place by tightening the 'Arm Bolt' with a 10mm spanner, until the 'Arm Bolt' is tightened firmly so the 'Moveable Arm' cannot move.
 - Then turn the speed valve anti-clockwise so that the door closes at the desirable speed.



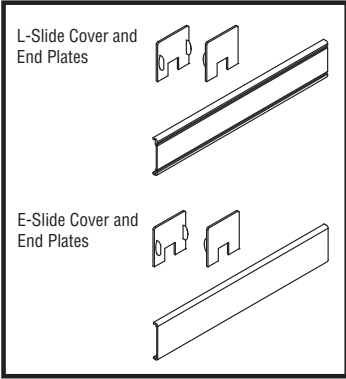
- 6 • Ensure the 'Cover Grommet' and 'Base Connector' are pushed into the 'Radius Cover'.
- Slide the 'Radius Cover' over the body locating onto both 'Screw G'.
 - Tighten both 'Screw G' so that the cover does not move.



- 7 • Remove the 'Switch Box' screws and adapt the box (see assembly view) to suit the 24V DC (at 100mA ±10%) power supply.
- Connect the power supply and fix the 'Switch Box' to the wall using 2 x 'Screw F' (see assembly view).
 - Ensure the location of the 'Switch Box' does not hinder operation.



- 8 • Re-assemble the 'Switch Box' ensuring the power is connected correctly.
- Then insert the 'Loop Assembly' into the 'Base Connector' (arrows on diagram).
 - Ensure 'Screw C' is securely in place.



If using optional slide cover: Slide cover on to front of closer and clip in end plates.