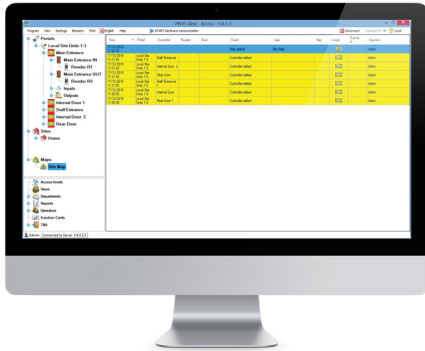


# PORTAL PLUS SYSTEM

## PC BASED NETWORKABLE ACCESS CONTROL

The Portal Plus system is a networkable access control system with windows based PC programming and management software (PROS CS) with support for up to 15,000 users and unlimited entrances. It allows greater flexibility in the design and installation of an access control system having a modular design and facilities for proximity, bio access and coded access readers.

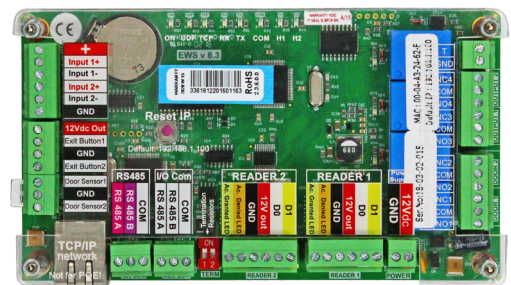


The system is based on 2 door controllers (EWSi) that are housed in a lockable cabinet with an integral 13.8Vdc 3.5A switched mode power supply (PPCU2) and including an Ethernet connection (TCP/IP) allowing controllers to be connected to a LAN or WAN with the potential expansion to unlimited doors and unlimited distances. Additionally an RS485 bus connection is included on the controller that will link additional controllers to the same Ethernet connection. The integration of door monitoring, push to exit button inputs, free inputs, free outputs and 16 status LED's all help

make this a simple to install yet extremely flexible system.

### 2 Door Controller EWSi

- Up to 15,000 users;
- Up to 30,000 events per controller (unlimited per system);
- Built-in TCP/IP Ethernet connection (also includes RS485 connections);
- Programmable Wiegand interface (8 to 128 bit);
- 2 free inputs, 2 exit button inputs and 2 door sensor inputs;
- 2 free outputs and 2 door relay outputs;
- 2 configurable Wiegand reader inputs.



The system also benefits from distributed intelligence allowing the system to continue functioning even during times of network problems. The PROS CS software is a user friendly windows based software that allows the adding, editing or deletion of users and includes finger print enrolment integrated into the software. Other features include remote relay activation, mantrap option, free inputs and outputs that can be configured as per an installation or user requirement. There are two versions of the PROS CS software, the Free License which is included with the PPCU2 control cabinet and the Full License which is made available by simply plugging in the CS/USBKEY (USB dongle) into the PROS CS Server PC and is packed with additional features including lift control programming, web server reports, global anti-passback and time & attendance feature.

## THE PROS CS SOFTWARE

There are three parts to the PROS CS software:

### PROS CS SERVER

The server software would be installed on one PC along with the client program which would connect to the Portal Plus hardware either via a network (TCP/IP) connection or through an RS485 bus to USB. A USB dongle is not required for the software installed on the server PC unless access to all the features available with the Full License is required. On simple installations the client and server will be installed together on one PC.

### PROS CS CLIENT

The client software can be installed on a number of PC's either local to the server PC or remotely via the internet. A USB dongle is required for each client PC. The client environment looks and feels like the PROS CS software allowing all features to be controlled. Client access levels can be setup to restrict users access to certain features.

### PROS CS WEBSERVER (only available with the PROS CS Full License)

The webserver is optional and enables users to view and generate reports from a standard web browser. A useful feature of this is the ability to allow each user the facility to view their own reports while allowing operators to view reports of all users.

## PROS CS SOFTWARE FEATURES - FREE LICENSE AND FULL LICENSE COMPARISON

Feature	Free License	Full License	Feature	Free License	Full License
PROS CS Client access from remote PC (previous versions of PROS CS require USB license key at PROS CS Client PC)	✓	✓	Muster Reports	✓	✓
MS Access database	✓	✓	Find User option	✓	✓
SQL database	✗	✓	Web Report Server	✗	✓
Users shadow table	✗	✓	Scheduled Tasks	✗	✓
Switch or Edit Database Type & Connection	✗	✓	Scenarios	✗	✓
Global Anti-passback	✗	✓	ID card Design & Printing	✗	✓
Maps	✓	✓	Number of PROS CS Servers defined in the Client	Unlimited	Unlimited
Video integration <sup>*1</sup>	✓	✓	No. of Sites	Unlimited	Unlimited
Customizable toolbars	✓	✓	PROS CS Operators	Unlimited	Unlimited
Access Levels	✓	✓	Client SDK	✓	✓
Access Reports	✓	✓	Global Fire	✗	✓
Function Cards	✓	✓	Lift Control <sup>*2</sup>	✗	✓
Time & Attendance Reports	✗	✓	Custom Wiegand Configurations	✓	✓
Automatic Evacuation Reports	✓	✓	Integrated Fingerprint Management	✓	✓
			Import/Export Users to Excel	✓	✓
			Multiple Language Selection	✓	✓

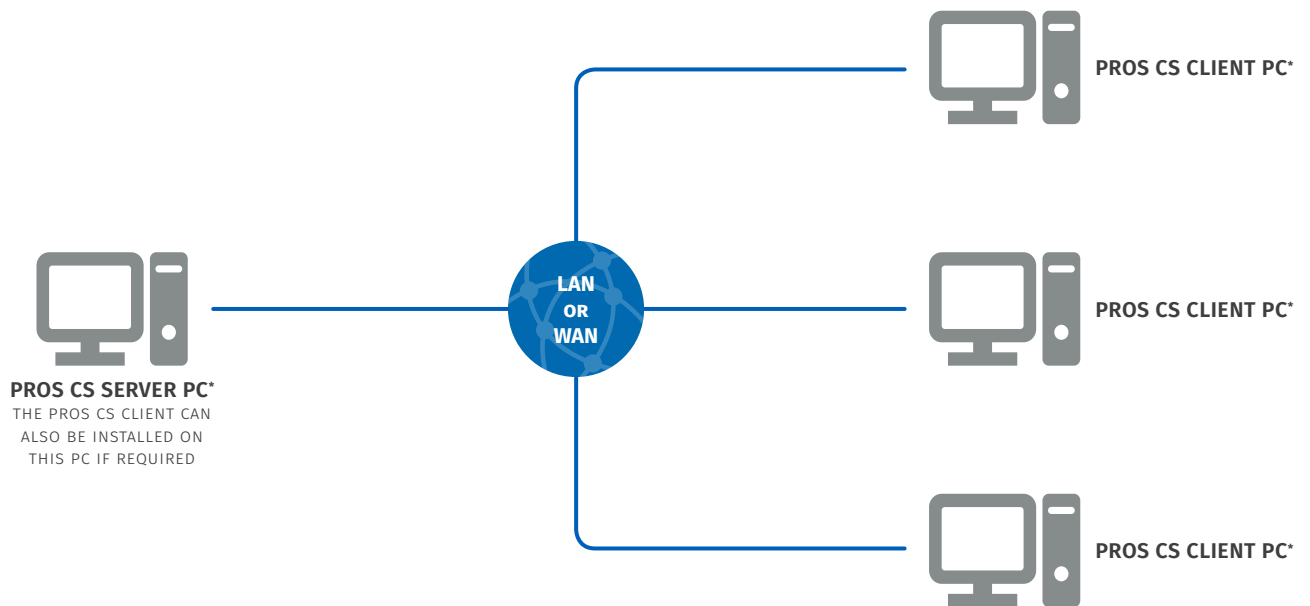
<sup>\*1</sup> video integration for third party CCTV available.

<sup>\*2</sup> lift control is available when used with the RB0408 lift interface relay unit.

## RECOMMENDED PC REQUIREMENTS

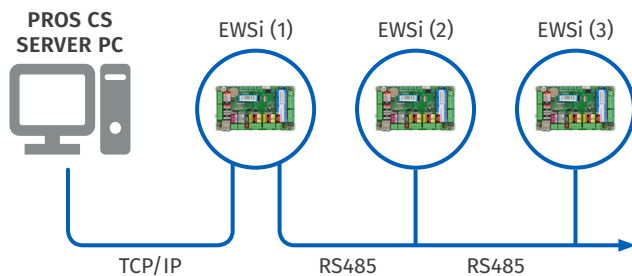
	PROS CS Server PC		PROS CS Client PC	
	(minimum)	(recommended)	(minimum)	(recommended)
OS	Windows 7	Windows 10	Windows 7	Windows 10
CPU	Intel® 2GHz	Intel® Core™ i3 or higher	Intel® 2GHz	Intel® Core™ i3 or higher
RAM	2 GB	4 GB	2 GB	4 GB
HDD	100 GB	500 GB	100 GB	500 GB
DISPLAY (monitor)	Any size	Any size	10", 1024 x 768dpi	15", 1280 x 800dpi

\*A USB DONGLE IS ONLY NECESSARY IF THE FULL LICENSE FEATURES ARE REQUIRED

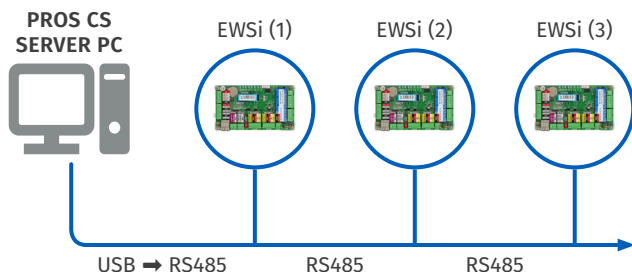


## SYSTEM CONFIGURATIONS

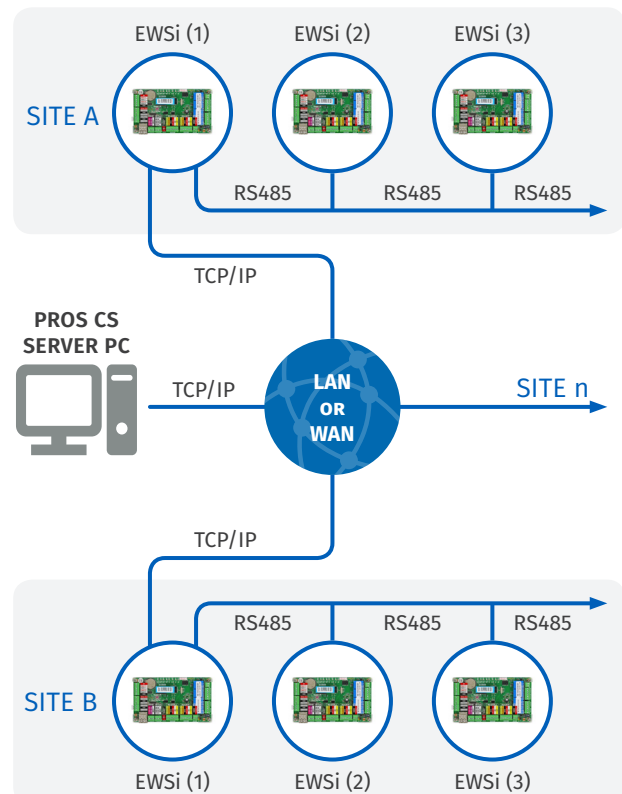
**TCP/IP and RS485 Network:** Combine both TCP/IP and RS485 connection on the same system for maximum flexibility.



**RS485 Network:** Connect controllers using an RS485 bus (via USB to RS485 converter). RS485 hubs and repeaters can also be used.



**TCP/IP, LAN or WAN Network:** Distribute controllers via TCP/IP, LAN or WAN network over multiple sites.



A range of readers are available (proximity, coded access and bio access), all in the same robust design including an illuminated touch to exit button range. The extensive range of reader modules are also available for the Vindex 4000, VR4K and VR series entrance panels allowing full integration with an intercom system.

Use the following step by step guides and tables to help build up a Portal Plus system suitable for your requirements.

## STEP 1 - READER SELECTION (REFER TO TABLES FOR MORE OPTIONS)

### PROXIMITY READER



EM: MTPXS-EH, MTPXBK-EH etc.  
MIFARE: MTPXS-MF, MTPXBK-MF etc.

### CODED ACCESS KEYPAD



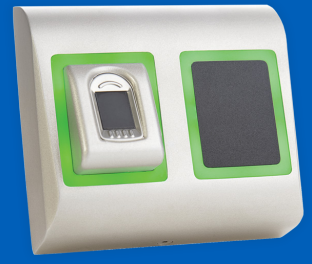
MTPADS-M, DINPAD-M-E etc.

### FINGER PRINT READER



BIOCS, B100S etc.

### DUAL TECHNOLOGY READER



EM: BIOPROXS-EH etc.  
MIFARE: BIOPROXS-MF etc.



## STEP 2 - NO. OF CONTROLLERS INC. BATTERY OPTION & PROS CS CLIENT SELECTION

### PPCU2 CABINET (INC. PROS CS FREE LICENSE)



PPCU2, ONE REQUIRED FOR EVERY TWO READERS

### NP7-12 BATTERY



OPTIONAL BATTERY, ONE REQUIRED FOR EVERY PPCU2

### PROS CS FULL LICENSE USB DONGLE



OPTIONAL, ONLY NECESSARY IF FULL LICENSE FEATURES ARE REQUIRED



## STEP 3 - FOB & CARD SELECTION (REFER TO TABLES FOR MORE OPTIONS)

### FOB



EM: PBX1E  
MIFARE: PBX-1E-MS50 etc.

### CARD



EM: PBX2  
MIFARE: PBX-2-MS50

### MULTIPLE CARD PACKS



EM CARD PACKS: PBX2/10PK, PBX2/20PK, PBX2/40PK,



## STEP 4 - OPTIONAL ACCESSORIES (REFER TO TABLES FOR MORE OPTIONS)

### EXIT BUTTON



MTTS-EXIT, DINMTT-E

### DESK MOUNT ENROLMENT PROXIMITY READER



PROX-USB

### DESK MOUNT ENROLMENT FINGER PRINT READER & PROXIMITY READER



BIOPROX-USB, B100PROX-USB

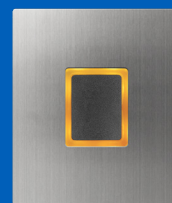
### USB/RS485 CONVERTER



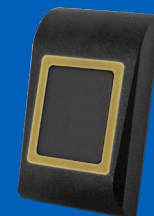
481

**TABLE A - Proximity Readers**

MTPXS-EH, MTPXBK-EH	IP65, surface Wiegand (125kHz) proximity reader, silver or black
MTPXS-MF, MTPXBK-MF	IP65, surface Mifare Wiegand 26/34 bit (classic, ultralight & desfire 13.56MHz) reader, silver
DINMTPX-M-E	Proximity reader electronics (EM) with Wiegand output (requires DINFP face plate, see TABLE E and steps on page 6)
DINMTPX-MF-E	Proximity reader electronics (Mifare) with Wiegand output (requires DINFP face plate, see TABLE E and steps on page 6)
MINI-EH	Mini surface black ABS proximity reader (125kHz)
MINI-MF	Mini surface black ABS Mifare Wiegand 26/34 bit prox. reader (classic, ultralight & desfire 13.56MHz)
VPROX2-M	IP67, surface vandal resistant Wiegand proximity reader, aluminium chrome matt
4849PP	4000 series module Wiegand proximity reader
VR4KPPM	VR4K series module proximity reader
VR4KEMP	VR4K series module EM proximity reader with Wiegand output
VR4KMFP	VR4K series module Mifare proximity reader with Wiegand output
XPROX	Panel mount proximity reader



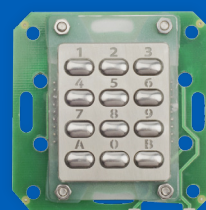
EM: VR4KEMP  
MIFARE: VR4KMFP



EM: MTPXBK-EH  
MIFARE: MTPXBK-MF

**TABLE B - Coded Access Keypads**

MTPADS-M	IP65, surface Wiegand coded access keypad, silver
DINPAD-M-E	Coded access electronics with Wiegand output (requires DINFP face plate, see TABLE E and steps on page 6)
VR4KPAD	VR4K series module back lit coded access with Wiegand output



DINPAD-M-E



MTPADS-M

**TABLE C - Finger Print Readers (BIO)**

BIOCS	IP54 (internal use only), surface Wiegand finger print reader (9500 templates), silver
B100S	Surface Wiegand swipe finger print reader (100 templates), silver
DINBIOC	Finger print reader electronics (9500 templates) with Wiegand output (requires DINFP face plate, see TABLE E and steps on page 6)
DINB100-E	Swipe finger print reader electronics (100 templates) with Wiegand output (requires DINFP face plate, see TABLE E and steps on page 6)
VR4KBIO	VR4K series module finger print reader (9500 templates) with Wiegand output



BIOCS



B100BK

**TABLE D - Surface Dual Technology Readers\***

BIOPROXS-EH	IP65, finger print reader (9500 templates) with EM proximity reader, silver
BIOPROXS-MF	IP65, finger print reader (9500 templates) with Mifare proximity reader, silver
BIOPADS-M	IP65, finger print reader (9500 templates) with Wiegand coded access, silver
B100PROXS-EH	IP65, finger print reader (100 templates) with EM proximity reader, silver
B100PROXS-MF	IP65, finger print reader (100 templates) with Mifare proximity reader, silver
B100PADS-M	IP65, finger print reader (100 templates) with Wiegand coded access, silver
PADPROXS-EH	IP65, Wiegand coded access with EM proximity reader, silver
PADPROXS-MF	IP65, Wiegand coded access with Mifare proximity reader, silver



EM: PADPROXS-EH  
MIFARE: PADPROXS-MF

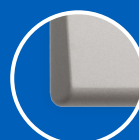
\* for flush dual readers a combination of the following reader electronics:

DINMTPX-M-E, DINMTPX-MF-E, DINPAD-M-E, DINBIOC and DINB100-E can be used in conjunction with one another along with the required horizontal or vertical double gang DINFP face plate (refer to TABLE E and steps on page 6 for further information).

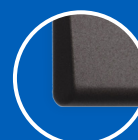
**TABLE E - Single & Double Gang Flush Face Plates**

DINFPS	Single gang flush face plate, silver
DINFPC	Single gang flush face plate, charcoal
DINFPW	Single gang flush face plate, white
DINFPV2S	Double gang flush face plate (vertical), silver
DINFPV2C	Double gang flush face plate (vertical), charcoal
DINFPV2W	Double gang flush face plate (vertical), white
DINFPH2S	Double gang flush face plate (horizontal), silver
DINFPH2C	Double gang flush face plate (horizontal), charcoal
DINFPH2W	Double gang flush face plate (horizontal), white

The DINFP series face plates are available in 3 different colours  
silver, charcoal and white



silver



charcoal



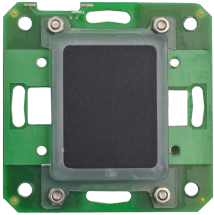
white



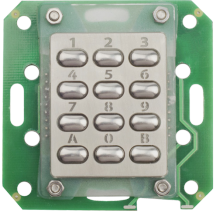
## Flush, Single or Dual, Technology Reader Selection

By selecting any of the reader electronics from the previous TABLES and a suitable DINFP face plate from TABLE E, a single or dual flush reader can be created as desired.

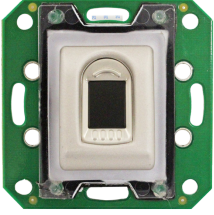
STEP 1 - SELECT ELECTRONICS



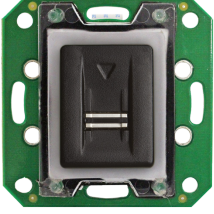
DINMTPX-M-E, DINMTPX-MF-E



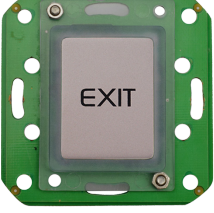
DINPAD-M-E



DINBIOC




DINB100-E

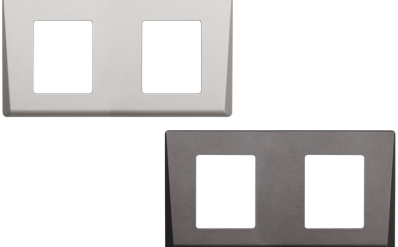


DINMTT-E

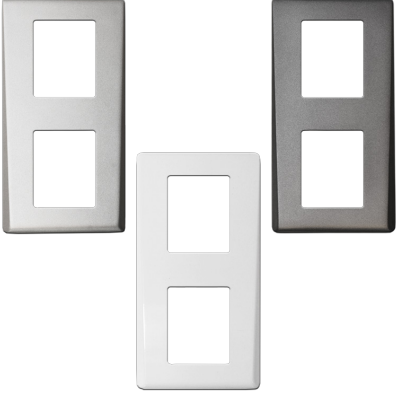
STEP 2 - SELECT FRAME



DINFPS, DINFPC, DINFPW





DINFPH2S, DINFPH2C, DINFPH2W




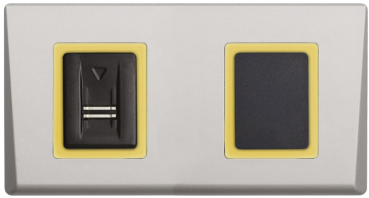
DINFPV2S, DINFPV2C, DINFPH2W


PRODUCT











Reader electronics and DINFP face plates are designed to fit standard single gang flush boxes

**TABLE F - Proximity Fobs & Cards**

PBX1E	ABS fob EM format 125kHz
PBX-1E-MS50	ABS Mifare fob 1K memory (grey)
PBXB-1E-MS50	ABS Mifare fob 1K memory (blue)
PBXBK-1E-MS50	ABS Mifare fob 1K memory (black)
PBXG-1E-MS50	ABS Mifare fob 1K memory (green)
PBXR-1E-MS50	ABS Mifare fob 1K memory (red)
PBX2	Thin card (0.75mm <sup>2</sup> ) EM format 125kHz
PBX-2-MS50	Thin Mifare card (0.75mm <sup>2</sup> ) 1K memory
PBX-2-MS70	Thin Mifare card (0.75mm <sup>2</sup> ) 4K memory
PBX2/10PK	PBX2 card EM format 125kHz 10 pack
PBX2/20PK	PBX2 card EM format 125kHz 20 pack
PBX2/40PK	PBX2 card EM format 125kHz 40 pack

PBX-1E-MS50



PBXR-1E-MS50



Proximity fobs and cards available for both EM4100 (125kHz) and Mifare formats

PBXB-1E-MS50



PBXBK-1E-MS50



PBXG-1E-MS50



**TABLE G - Control Equipment**

PPCU2	Portal Plus control cabinet with 2 door EWSi controller, 13.8Vdc 3.5A switch mode PSU (inc. PROS CS Free License Software)
NP7-12	12Vdc, 7A rechargeable battery
CS/USBKEY	PROS CS Full License Software USB dongle (only necessary if Full License features are required)
RB0408	Lift Interface Relay Unit for lift control integration

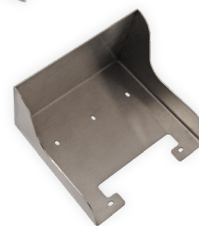
RB0408



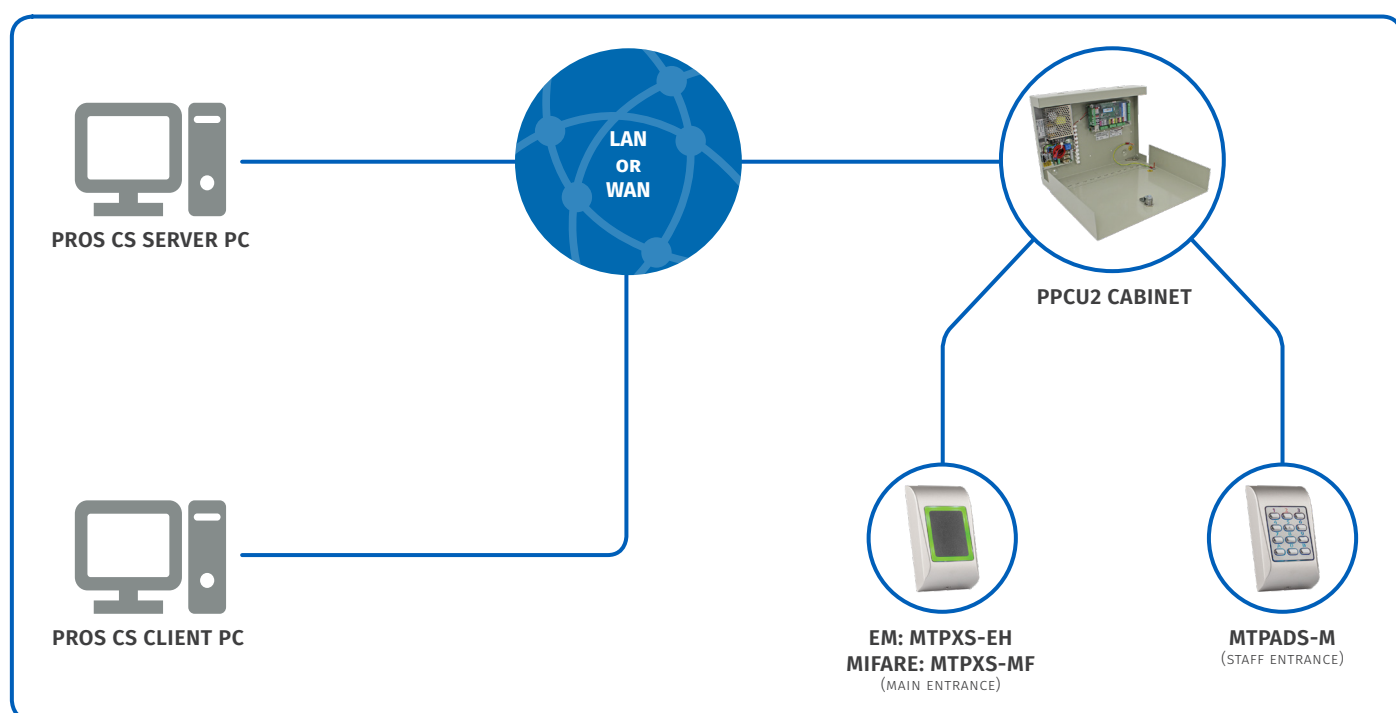
**TABLE H - Exit Buttons and Accessories**

MTTS-EXIT, MTTBK-EXIT	IP65, surface touch to exit button, silver or black
DINMTT-E	Touch to exit button electronics (requires DINFP face plate, see TABLE E and steps on page 6)
PROX-USB	Desk mount USB proximity reader (EM, Mifare & HID)
BIOPROX-USB	Desk mount USB finger print & proximity reader (EM, Mifare & HID)
B100PROX-USB	Desk mount USB swipe finger print & proximity reader (EM, Mifare & HID)
MC-MINI	Stainless steel protective shroud (single)
MCD-MINI	Stainless steel protective shroud (double)
481	USB/RS485 converter
I-7513	RS485 splitter/repeater (3 outputs)

MCD-MINI



B100PROX-USB





**Southern Office**

1 Osprey, Trinity Park,  
Trinity Way, London,  
E4 8TD

T 0870 300 1240 • F 020 8523 5825

**Northern Office**

Unit 4-7 Chllingham Ind. Estate,  
Chapman Street,  
Newcastle Upon Tyne, NE6 2XX

T 0870 300 1240 • F 0191 224 1559

[sales@videxuk.com](mailto:sales@videxuk.com) • [tech@videxuk.com](mailto:tech@videxuk.com)

