

Clarius®

Clarius® PLUS IP Medium Range

The **Clarius® Plus IP** is a high performance Infra-Red illuminator.

Incorporating the latest surface mount LED's with enhanced optical output and outstanding reliability, they deliver excellent night-time images.

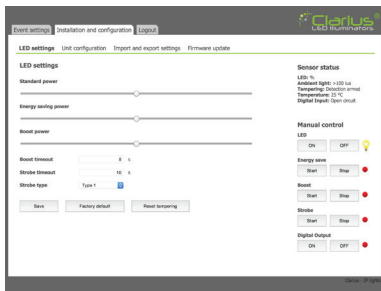
The **Clarius® Plus IP** is a internet protocol connected illuminator with integrated web browser interface.

The **Clarius® Plus IP** range of illuminators includes a new interchangeable lens diffuser system; which allows the user to quickly and easily alter the angle of illumination. Elliptical beam profiles allow more light to be delivered where it is needed, allowing both longer distances and minimising light wastage. The system also helps to prevent overexposure of foreground objects.

As standard the illuminator includes interchangeable lensing to deliver 10° circular, 20°, 30°, 60°, 80° & 95° elliptical beam profiles.

PRODUCT FEATURES

- IR Illuminator Designed To Provide Dedicated Lighting For IP Cameras Via PoE+ (Power Over Ethernet)
- Angle 10°, 20°, 30°, 60°, 80° & 95°
- Web browser interface
- Direct integration with VMS system*
- Elliptical Beam Profiles
- Enable Network Infrastructure
- IEEE802.3at Compliant
- Latest SMT **Dual Core LED™** Technology
- Distances Up To 95m (312')
- 850nm or 940nm Wavelengths
- 5 Year Warranty
- IP66 Weather Proof Rating
- Built-in Photocell IR On/Off
- Photocell Following Contact
- Telemetry Input for Remote Switching
- Vibration sensor
- **CleanLITE®** Self Cleaning Lens Coating Technology



*Currently supported VMS platforms

- Bosch
- Griffid GMS & GMC
- Axis
- Milestone XProtect
- Mirasys Carbon
- SeeTec Enterprise & Probox

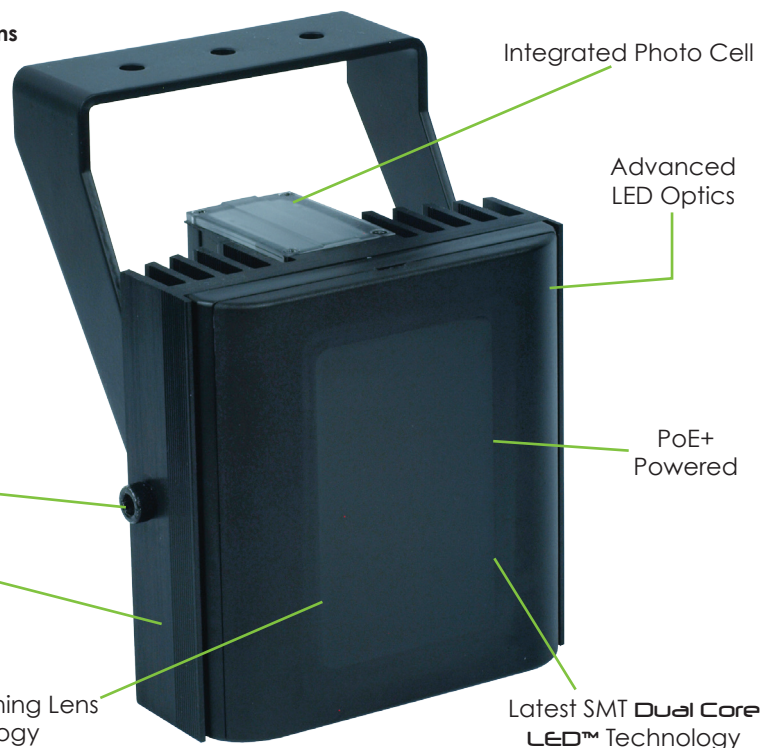


INTERCHANGEABLE
DIFFUSER LENS

Telemetry &
Camera Day/
Night Switching

High Quality
Anodised
Aluminium
Heatsink

CleanLITE® Self Cleaning Lens
Coating Technology



SECTORS



RESIDENTIAL



COMMERCIAL



INDUSTRIAL



BORDERS



MILITARY BASES



PORTS



POWER PLANTS



HERITAGE



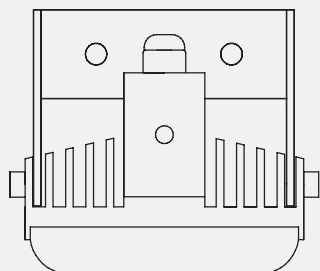
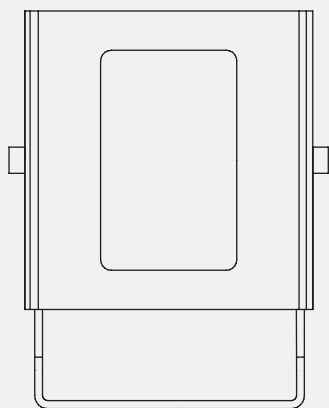
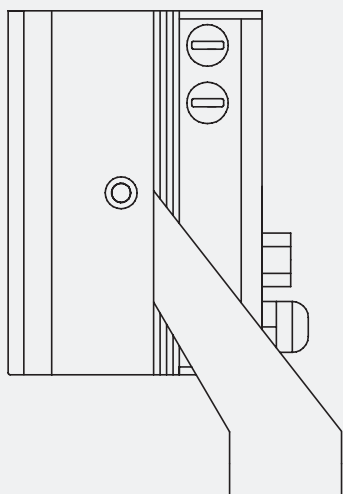
AIRPORTS



PRISONS

Product Code	Wavelength	Angle	Distance		FOV	
IM-8	850nm	10° - Circular	187m	614'	33m	107'
		20° - Elliptical	128m	418'	45m	148'
		30° - Elliptical	94m	307'	50m	164'
		60° - Elliptical	60m	195'	69m	225'
		80° - Elliptical	43m	139'	71m	234'
		95° - Elliptical	30m	98'	65m	213'
IM-9	940nm	10° - Circular	115m	376'	20m	66'
		20° - Elliptical	80m	262'	28m	93'
		30° - Elliptical	65m	213'	35m	114'
		60° - Elliptical	40m	131'	46m	152'
		80° - Elliptical	30m	98'	50m	165'
		95° - Elliptical	20m	66'	44m	143'

TECHNICAL SPECIFICATIONS



GENERAL

Electronics

High Efficiency Surface Mount High Power **Dual Core LEDs™** With Advanced Current Limited Integral Control Circuitry

Construction Front Window

Robust High Quality Aluminium Extrusion
Polycarbonate High Transmission Protective (Vandal Proof) IR Filter with CleanLITE® Technology

Finish Power Cable Interface Connector

Black Anodised
3m (9ft)
Photocell Following Contact & Remote Telemetry Input

Pressure Equalisation Vent Photocell Illumination

Prevents Thermal Expansion & Pressure Cycling
Software Adjustable 20 -70 Lux
Software Adjustable 10% - 100% with Low power and pulse modes

Vibration/Knock sensor Operating Temperature Weight

Software adjustable sensitivity
-50° to 60°C (-58° to 140°F)
1.05Kg (2.3lbs)

Mount Dimensions

Powder Coated Stainless Steel Wall Mount
111 x 110 x 78mm (4.49" x 4.33" x 3.07")

ELECTRICAL

High Power over Ethernet Consumption User Interface

IEEE802at Compliant, TCP/IP
26W
Web browser user interface. No software or installation needed

WAVELENGTH

Standard Optional

850nm (Semi Covert). Faint Red Glow Only
940nm (Covert). Minimal Visible Glow

CERTIFICATION

Safety

EN60598:2004 Electrical Safety
EN60825-1 Laser Eye Safety

IP EMC

IP66 In Accordance With EN60529:1992
EN61000, FCC Part 15. 107
15. 108 Class B

WEEE

Waste Electrical & Electronic Equipment European Directive 2002/96/EC

RoHS

Restriction Of Hazardous Substance European Directive 2002/95/EC



www.qjd.co.uk | info@qjd.co.uk | +44 (0) 1706 363 998

Unit 2 Birch Business Park, Whittle Lane, Heywood, Lancashire, OL10 2SX