

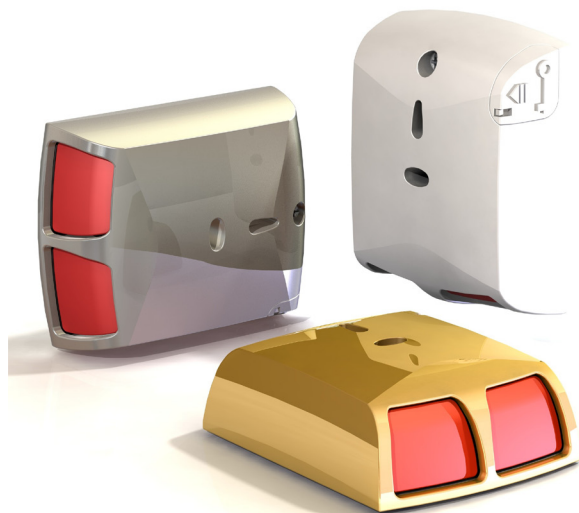
Elmdene Panic Buttons

Product Overview

The Elmdene range of panic buttons has been ergonomically designed and are ideal for use in commercial and domestic intruder installations.

All units are double push and are provided with integral resistors for use with most control panels. There is also the option for double pole connection if required. Spare terminals allow through connection for multiple units wired to one zone.

They are available in 3 colours (White, Stainless Steel and Brass plate finishes)



Features

- Silent operation
- Grade 3
- Environmental class II
- FSL and D/P connection
- Multiple control panel and resistor options
- Easy connection of multiple units
- Cover and rear tamper
- Anti-lock reset mechanism
- Independent micro switch tamper
- Metal reset key
- Selectable normally closed or open contacts
- 5 year warranty

Approvals

CE Mark

RoHS Compliant

Technical Information

Contact Voltage Rating	30V dc
Contact Current Rating	1A (max)
Operating temp.	-10°C to +40°C
Operating Life	> 1 x 10 ⁸ Operations

The units comply fully with 'The ACPO 10 Point Plan' and all requirements under EN50131-1:2006 and PD6662:2010.

Part Numbers:

Part Number	Finish	Dimensions W x L x H mm
ELM-PA-G3-W	White	62 x 80 x 27
ELM-PA-G3-SS	Stainless Steel	
ELM-PA-G3-B	Brass	