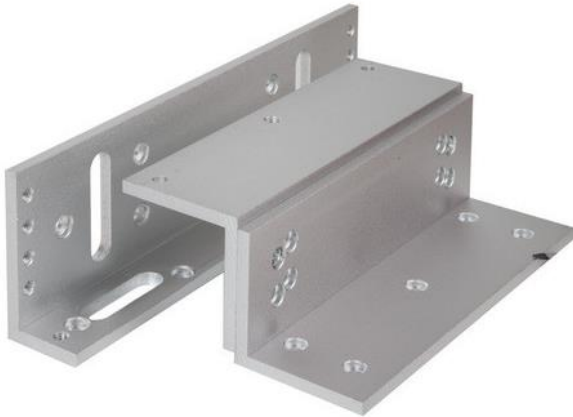


EM500ZL-FIRE

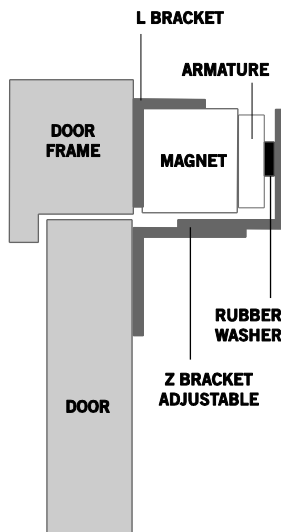
Z & L bracket for Standard fire rated maglocks



This adjustable Z & L bracket set provides a simple fixing method for standard fire rated maglocks on inward opening doors. The Z-bracket is adjustable to cater for recessed doors.

Features

- Compatible with SSP standard fire rated maglocks
- Adjustable Z bracket
- Satin anodised aluminium finish



Technical Information

- Z = 186mm(L) x 60mm(D) x 140mm(H)
- L = 267mm(L) x 72mm(D) x 45mm(H)
- Suitable for use on inward opening doors
- Maximum horizontal adjustment of the Z bracket = 35mm

Related Products

EM10-FIRE



EM20-FIRE



EM500L-FIRE



SPB004S

