

# Z6W4582X3

## 4K Day & Night Auto Focus Smart Dual Light Turret IP Camera

**Z6W**  
SERIES

The LILIN Z6W series cameras are equipped with a high-resolution 8-megapixel CMOS sensor, combining 3D digital noise reduction (MCTF) and 2D WDR technology to ensure clear visibility in various lighting conditions. They support day and night functionality and feature a zoom lens for flexible adjustments to the surveillance range.

The Z6W series also includes digital PTZ (Pan, Tilt, Zoom) and ROI (Region of Interest) capabilities, supporting intelligent video surveillance (IVS) functions and customizable smart events to meet different needs. Compatible with ONVIF Profile S, T, and G standards, the cameras are designed with waterproof and vandal-resistant construction.

Additionally, the Z6W series is equipped with a dual-light source system, including white light LEDs and infrared, providing more flexibility and realistic imaging. The white light LEDs can record full-color images in dark scenes and emit warning signals, while the infrared provides black-and-white images in low-light environments. Both modes can intelligently switch to adapt to varying lighting requirements, enhancing the practicality and reliability of the equipment.



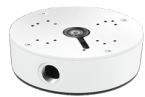
- Ultra HD 8M megapixel CMOS image sensor
- 8MP H.265/HEVC and H.264/AVC high-performance video compression
- Simultaneous streaming of H.265 and H.264 encoded streams
- Auto focus with zoom / focus motorized lens
- 3D noise reduction (MCTF)
- 2D WDR function
- HDR function up to 140dB
- IVS / AI supported
- Motion / Tamper / Audio / Alarm / Network lost detection / Global Counter / Virtual Input / Metadata
- SMART event
- High efficiency IR LED, radiant distance up to 40m, WarmLight viewable length up to 40m
- Day & Night (IR cut removable)
- Built-in highly sensitive microphone
- 2-way audio supported
- Digital I/O : 1 in, 1 out
- ONVIF Profile S , T , G , M supported
- IP67 rain and dust resistant
- Vandal resistant approve IK10



Video Performance	
Min. Illumination	Color: 0.01 Lux at F1.35 ; B/W: 0.005 Lux at F1.35 ; 0 Lux with Light LED ON
Lens / Night Vision (Infrared LED)	
Focal Length	2.8 – 12 mm (zoom / focus motorized)
Iris	F1.4 (W) – F2.2 (T)
Iris Control	Fixed IRIS
Angle of View	109.8° (W) – 46.2° (T) (H) , 57.2° (W) – 25.9° (T) (V) , 126.3° (W) – 53° (T) (D)
Peak Wavelength	IR : 850nm, Warm Light : 3000K
Beam Spread	60° , 90°
Radiant Distance	IR : 40M, Warm Light : 40M
Sensor	
Pick Up Element	1/1.8" CMOS image sensor
Effective Pixels	3856 (H) × 2176(V) = 8,390,656 (Pixels)
Light Sensor	Yes
Certifications	
CE / FCC / UKCA	Yes, EMI Class A
IP Rating	IP67
Vandal Resistant Rating	IK10 (Casing)
PC Requirements	
CPU	Intel® Core™ i7 or higher grade
OS	Windows 7 or above
RAM	8GB or above, Dedicated Graphics Card
Web Browser	Microsoft® Internet Explorer® 9 or above, Microsoft® Edge
Input / Output	
Audio Input / Output	Audio 1 output, Mono, Terminal Block
Audio	Two-way Audio, G.711 u-law / PCM / AAC, Built-in Microphone
Alarm Input / Output	Digital 1 input (TTL, +3 – 5VDC) / 1 Output (MOS Relay contact N.O., Load.max. 40VDC, 450mW / 300mA, 450mW) , Terminal Block
Video Streaming	
Video Compression	H.265/HEVC main profile, H.264 main and high profile , Motion JPEG
Video Streaming	RTP/HTTP, RTP/TCP, RTP/UDP, Multicast streams in H.265 and H.264 and Motion JPEG, configurable frame rate and bandwidth
Number of Streams	3
Video Bitrate	128Kbps – 12Mbps; Frame rate and bit rate controllable on-the-fly; VBR / CBR / GOP supported, Fixed bitrate
Network Security	
Encryption	Base64 HTTP encryption, HTTPS encryption
Authentication	Digest HTTP authentication, RTSP authentication, DDNS via HTTPS
Address Filter	Yes
Access	Multiple user access levels with password protection
User accounts	10 user accounts available
Multi IP Address	Yes
Video Resolutions (H x V)	
Resolution	4K(3840 × 2160), 6M(3072 × 2048), 5MP(2592 × 1944), 4MP(2304 × 1728), 3.1MP(2048 × 1536), 3MP(2304 × 1296), 2MP(1920 × 1080), 1.3MP(1280 × 960), 1MP(1280 × 720), D1(720 × 480, 720 × 576), VGA(640 × 480), CIF(352 × 240)
Maximum Frame Rate	Normal mode: 60Hz: 30 FPS @ 3840 × 2160 50Hz: 25 FPS @ 3840 × 2160 HDR mode: 60Hz: 20 FPS @ 3840 × 2160 50Hz: 20 FPS @ 3840 × 2160
Video Functions	
Scanning System	Progressive Scan
Infrared Cut Filter	Auto / Day (Color) / Night (Mono) / Schedule
White Balance	Auto / Manual

Electrical Shutter	1/30(1/25)s – 1/30000s
Sense Up	Off / x2 / x4 / x8 / x16
Sense Up+	Yes
Auto Gain Control	60 dB Variable Gain
S/N Ratio	More than 50dB (AGC off)
3D Noise Reduction	Off / 1 – 32 Selectable
2D WDR	Off / Auto / x2 / x3 / x4
High Dynamic Range	Up to 140dB (by HDR mode, 2 shutter line interleave)
Privacy Masking	Off / On (4 zones)
Image Effects	Brightness, Contrast, Hue, Saturation, Sharpness, Mirror, Flip, Rotation, Defog
Auto Focus	Support
Smart IR	Yes
EV (Exposure Value)	Adjustable
Integration	
Mobile Application	Integrated to LILIN mobile app (LILIN Pro) iPhone, iPad, Android support
Video Management	ONVIF Profile S / ONVIF Profile T / ONVIF Profile G / IVS events, LILIN Navigator Enterprise 5.0 support, Third party VMS through LILIN HTTP API
SD Card Recording	Support (128GB) Micro SD/SDHC/SDXC card for circular recording (card is not included)
SD Card Compatible List	Micron - 32GB,64GB,128GB,256GB,512GB, 1TB (SDXC, U1, C10) Transcend - 4GB SD,8GB SDHC,32GB SDHC C10,128GB SDXC C10 SanDisk - 8GB SDHC, 32GB, 64GB, 128GB SDHC C10 Kingston - 64GB SDXC C10
Maintenance	Firmware update via HTTP and IP Scan; Firmware available at website
IVS Basic 1.0	Motion / Tamper
Event Triggers	Motion / Tamper / Audio / Alarm / Network lost detection / Global Counter / Virtual Input / Metadata
Event actions	FTP / SMTP / HTTP post / SD card / SAMBA / Alarm Output / Push Service / Global Counter / Virtual Input
Languages	English, Traditional Chinese, Simplified Chinese, Russian, Italian, Hungarian, Korean, French, Turkish, Arabic, Spanish, Japanese
Network	
Ethernet	10BASE-T/100BASE-TX, RJ-45
OSD	Position configurable text overlay for date, time, camera ID, event status
CPU, Memory	Embedded Dual-core ARM Cortex-A9 1.2GHz CPU & (DDR 1024MB/Flash 512MB)
OS	Embedded Linux 4.19
Network Protocols	IPv4, TCP, UDP, HTTP, HTTPS, QoS, NTP, DDNS, FTP, ARP, DHCP, PPPoE, DNS, RTSP, RTP, Telnet, ICMP, IGMP, SMTP, Multicast, ONVIF Profile S, ONVIF Profile T, ONVIF Profile G, ONVIF Profile M
Max number of online users	10 simultaneous users
Video Display	LILIN Universal ActiveX & HTML5
Log	Event & operation log & IVS event log
Schedule	Support holiday list
Network Storage	NAS (Support SAMBA/CIFS)
Power and Environment	
Starting Temperature	-10° C – +50° C (-14° F – 122° F)
Operating Temperature	-30° C – +50° C (-22° F – 122° F)
Storage Temperature	-25° C – +60° C (-13° F – 140° F)
Humidity	0% – 90% RH
Power Supply	DC12V ±10% / PoE (IEEE 802.3af compliant)
Power Consumption	DC12V, 8.7W / PoE, 10.1W
Mechanical	
Dimension	Ø111 x 120(H) mm
Weight	500g
Casing Material	Aluminum alloy
Warranty	
Warranty	3 Year(s)

Bracket



**BCR06W-V1**  
Wall-mount

Bracket



**BTD04W-V1**  
Wall-mount