



SBP-300CMTW

Telescopic Ceiling Mount



Key Features

- Weight : 3,750g (8.27lb)
- Material : Aluminum
- Color : White
- Mount screw size: TR30
- *Pipe can be extended once and maximum length can be up to 2524mm (99.37")
(based on using SBP-900CMP)

Compatible Accessories (Optional)



SBP-120HMMW



SBP-140HMMW



SBP-160HMMW1



SBP-180HMMW1



SBP-C15P



SBP-150CMP



SBP-300CMP



SBP-900CMP



SBP-300CMTW

Telescopic Ceiling Mount

Specifications

Mechanical	
Color	White
Material	Aluminum
RAL code	RAL9003
Product dimensions / weight	ø180x956.5~1667.5mm (ø7.09x37.66~65.65") / 3,750g (8.27lb)
Mount Screw size	TR30
Max. load	20kg
Conduit hole	19.1mm(3/4") (M25)
Supported products	- Hanging Adaptor : SBP-120HMMW/140HMMW/160HMMW1/180HMMW1, etc. - Pipe extension : SBP-C15P, SBP-150CMP/300CMP/900CMP ※ For further compatible models, please visit our website or use Toolbox

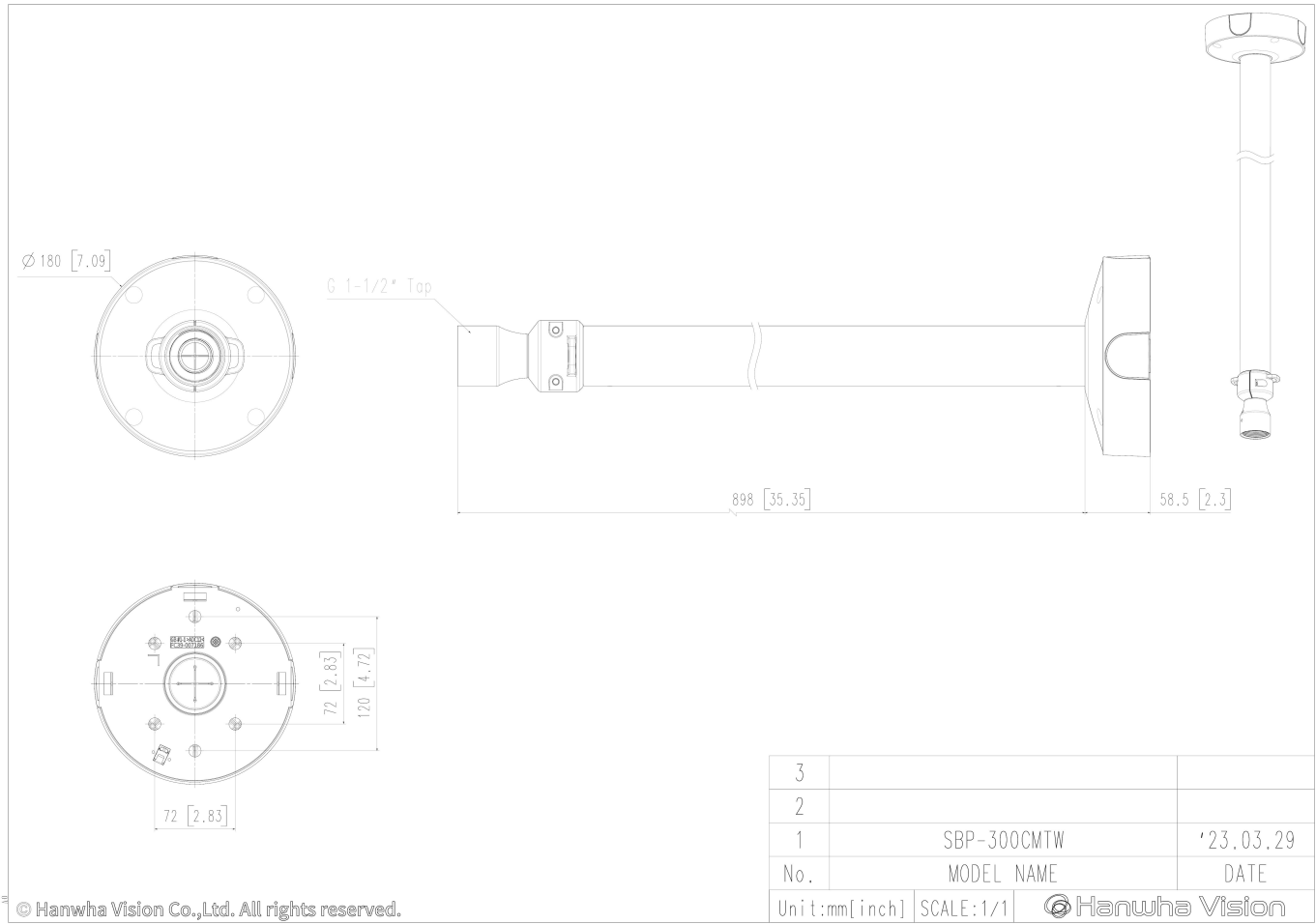
SBP-300CMTW

Telescopic Ceiling Mount



CAD

Unit:mm [inch]



© Hanwha Vision Co.,Ltd. All rights reserved.