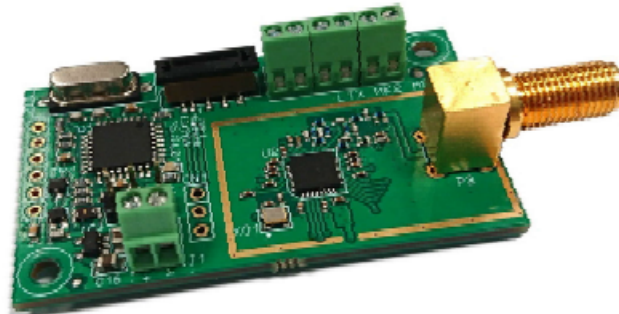


LTX 25mW Transceiver Module



Introduction

The LTX2 transmitter is a simple low power 25 mW short range device transceiver module. It is triggered by 4 volt-free (dry) contacts which send preprogrammed messages to radio pagers and/or fixed receivers. intended to be used in applications that require radio alerts on demand from a user or automated by the configuration software. Standard Scope radio protocol is transmitted direct to Rx devices. The LTX unit can be configured with the optional programming kit comprising of a dedicated interface cable and PC software.

Features

Frequency programmable: 433-459 MHz (UK/Europe).

RF power output: 0-13.9 dBm

4 dry (volt-free) trigger contacts, programmable as Normally Open, Normally Closed or Toggle operation.

Multiple repeat option (programmable) with variable repeat timer.

Test call option (programmable).

Programmable "Repeat Until Cancel" option available on contact 1. Repeat time interval is programmable. Reset function on contact 4 (cancels all repeats).

Serial data input.

Configurable trigger messages, 21 characters max per contact.

Configurable Reset message, 21 characters max.

Configurable Low Battery message, 21 characters max.

Configurable Battery Shutdown message, 21 characters max.

Programming via Scope programming cable and PC based application software.

Configurable Message for each Contact (Up to 21 Chars).

The module is powered from an external DC source of either 5V, 9V or 12V (model selectable).

Selectable Listen Before Transmit (LBT) function. The module monitors the operating frequency and waits for clear channel access before transmitting.

Can be configured as Normally Open, Normally Closed or Toggle.

Repeat Enabled (Up to 4 for each event).

Repeat Time can be configured (5 - 255 secs in 5 second steps)

Test Call Repeat Message (Up to 25 Hrs.)

Reset Message (Up to 21 chars).

Low Power Message (Up to 21 chars).

Power Shutdown Message (Up to 21 chars).

Contact Response Time = 30mS Min, 50mS Max.

Sales codes (LTX with SMA)

LTX5VSMAM2	5VDC LTX 4-zone transmitter module (PCB only) with SMA ant. connector
LTX9VSMAM2	9VDC LTX 4-zone transmitter module (PCB only) with SMA ant. connector
LTX12VSMAM2	12VDC LTX 4-zone transmitter module (PCB only) with SMA ant. connector

Specification

Power Input 5V to 12V DC

Current Consumption

Transmit (@ 25 mW) < 66mA

Sleep Mode < 50uA

Temperature

Operating -20 to +55 Deg. C

Transmitter

Freq Range: 433-459 MHz (UK/Europe)

Frequency Accuracy: +/- 1.0KHz (max) over operating temp range.

Power Output: 25mW max.

Channel Spacing: 12.5KHz.

TX Baud Rate: 512/1200/2400

Transmit Protocol: POCSAG

Serial Comms Baud Rate: 19200

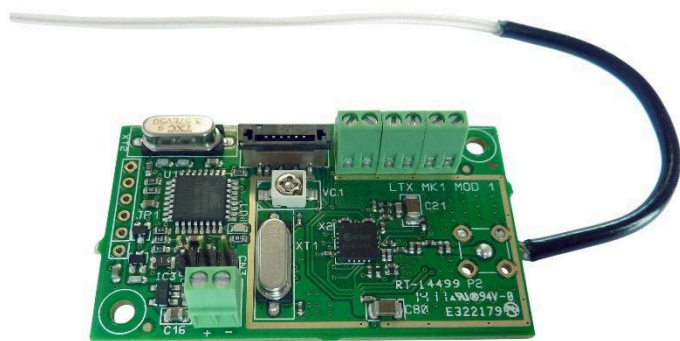
Footprint: 54mm (L) x 32mm (W) x 12 mm (H) nominal, Excluding antenna

UK/Europe Compliance

Radio Equipment Directive 2014/53/EU radio parameters: EN 300 220-2 V3.1.1 (2017-02)

ROHS Directive 2011/65/EU

Note: it is the user's responsibility to verify EMC & Safety compliance when fitted in their equipment.



Sales codes (LTX with wire antenna)

LTX5VM2	5VDC LTX OEM 4-zone transmitter module (PCB only) with wire antenna
LTX9VM2	9VDC LTX OEM 4-zone transmitter module (PCB only) with wire antenna
LTX12VM2	12VDC LTX OEM 4-zone transmitter module (PCB only) with wire antenna