



## EM500ZL-LITE

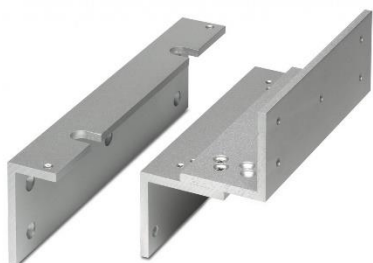
### Z & L bracket for standard maglock



This adjustable Z & L bracket set provides a simple fixing method for maglocks on inward opening gates. The Z bracket is adjustable to cater for recessed door.

#### Features

- Compatible with all SSP 'standard' maglocks
- Satin anodised aluminium finish
- Adjustable Z-bracket
- Suitable for use on inward opening doors
- 2 brackets are required for double maglocks



#### Technical Information

- Z = 186mm(L) x 63mm(D) x 126mm(H)
- L = 268mm(L) x 47mm(D) x 73mm(H)
- Maximum horizontal adjustment of the Z bracket = 30mm, in 10mm intervals

#### Related Products

**EM10-LITE**



**EM500L-LITE**



**EM20DS-LITE**



**SPB004S(C)-LITE**

