

## EM20(B)

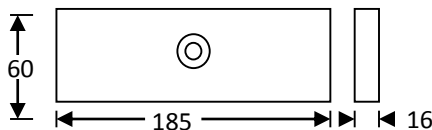
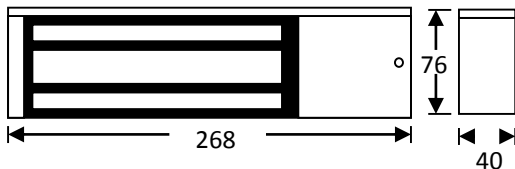
### Single standard maglock, monitored



Standard single monitored magnetic lock, designed for indoor applications where 545kg holding force is required. Monitoring provides LED lock status indication and relay contacts for signalling.

#### Features

- MOV provides spike and surge protection
- Fail-safe operation (power to lock)
- Anti-residual magnetism protection
- Top-plate, armature-plate and fixings included
- Dual voltage 12Vdc or 24Vdc (selectable)
- Surface mount
- Silver anodised aluminium finish
- Lock monitoring



#### Technical Information

- Holding force: up to 545kg (1200lb)
- Current draw = 500mA @ 12Vdc / 250mA @ 24Vdc
- Voltage tolerance: +/- 15%
- Operating temp: -10°C to +55°C
- Humidity: 0-95% non-condensating
- Weight: 4.8kg approx.
- Red/Green LED indicator
- Relay: COM/NO/NC (1A@24Vdc)