



PVM10CAMS & PVM Range (version 1.0.0.50 onwards)

# PRODUCT ACTIVATION

As part of new Product Security and IOT standards, the Vista range of PVM monitors no longer provide a default admin password. Instead, simply follow this guide to activate the PVM on first bootup and enter your own strong password for security.

Until successfully activated, the PVM will:

- Not display a live local image on its screen.
- Not be accessible via ONVIF from NVR recorders.
- Not stream video over Ethernet.

There are two simple methods to activate the PVM, according to your application.

	Method	Best For Activating
Local	Via the IR remote	Small number of PVMs
IP network	Via laptop and Discovery software download	Larger number & setting IP addresses

Once activated, there is no need to re-enter your strong password locally each time – only necessary when accessing the web page or adding the PVM to an NVR.

---

### PASSWORD RECOVERY

Should you lose your password, simply use the remote control, press **[MENU]** and select **Restore Defaults**. Then Reactivate the PVM.

---

- Power-up the PVM, refer to relevant Installation Guide for any assistance.
- The IOT Security screen (below-left) is displayed.

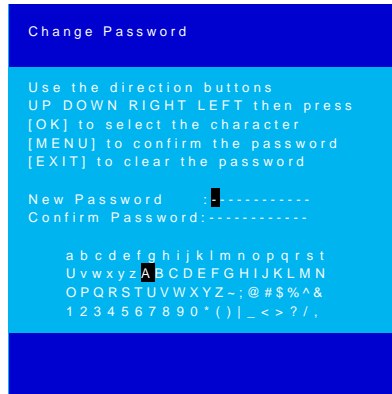
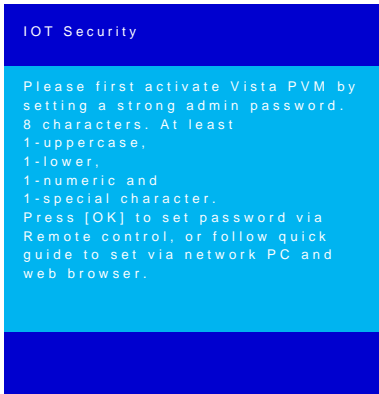
---

***Note: the requirements for the strong password!***

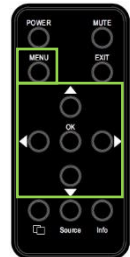
---

If activating via IP network and laptop, go to the **IP Network Activation** section instead.

- Press **[OK]** button, the “Change Password” screen will be shown (below-right).



- Use direction buttons, move to and highlight each character and press **[OK]** to select.
- Repeat to enter 8-character password, then press **[MENU]**

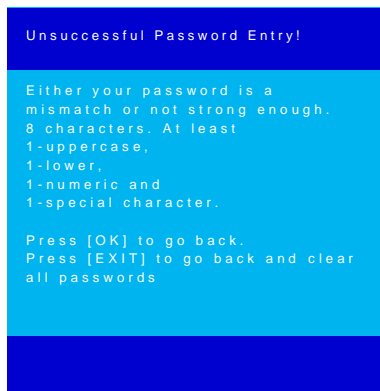



---

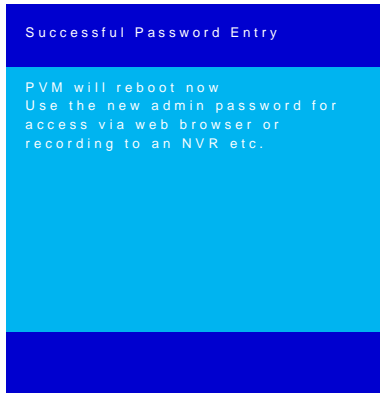
***Note: if needing to delete a character, press [EXIT] to start again.***

---

- If “Unsuccessful Password” screen is shown, password is not strong enough. Press either **[OK]** to go back and add more characters, or **[EXIT]** to go back and delete all characters and start again.



- Once strong password is entered - pressing **[MENU]** moves cursor to the “Confirm Password” line. Re-enter the password and press **[MENU]** to complete.
- If “Unsuccessful Password” screen is displayed – you mistyped the confirmation. Press **[OK]** to re-enter it, or **[EXIT]** to erase all passwords and start again.
- Once password is confirmed, the “Successful” screen displays and PVM reboots.



- Once rebooted, continue to configure the PVM as required. Use the new password for web access or to record the PVM to an NVR.

This completes the procedure.

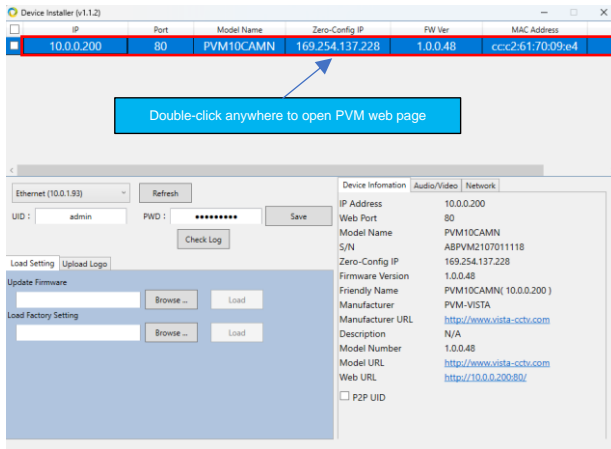
## IP Network Activation

- Install PVM Discovery Tool software to your laptop if not already installed (below).

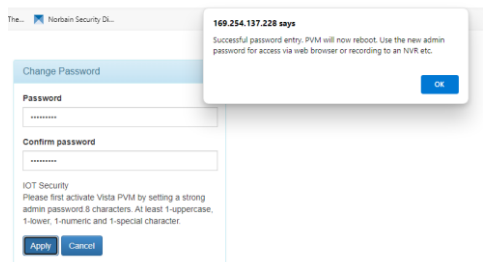
- Visit url [www.vista-cctv.com](http://www.vista-cctv.com).
- Click navigation bar and links **Support > Downloads > Vista IP**
- Click folders **[PVM10CAMxx Range] > [PVM10CAMs] > [Software] > [Discovery Tool]**

Click and download the latest version of the .zip file, unzip and install.

- Connect laptop to the same Ethernet LAN/VLAN as the PVMs.
- Open Device Installer – screen displays all PVMs on the same network (below).
- Double-click anywhere on required PVM (as below) to open its web page.



- Enter strong password. Ensure you receive the “Successful” prompt.
- The PVM will reboot after 5-seconds and be activated.



This completes the procedure.