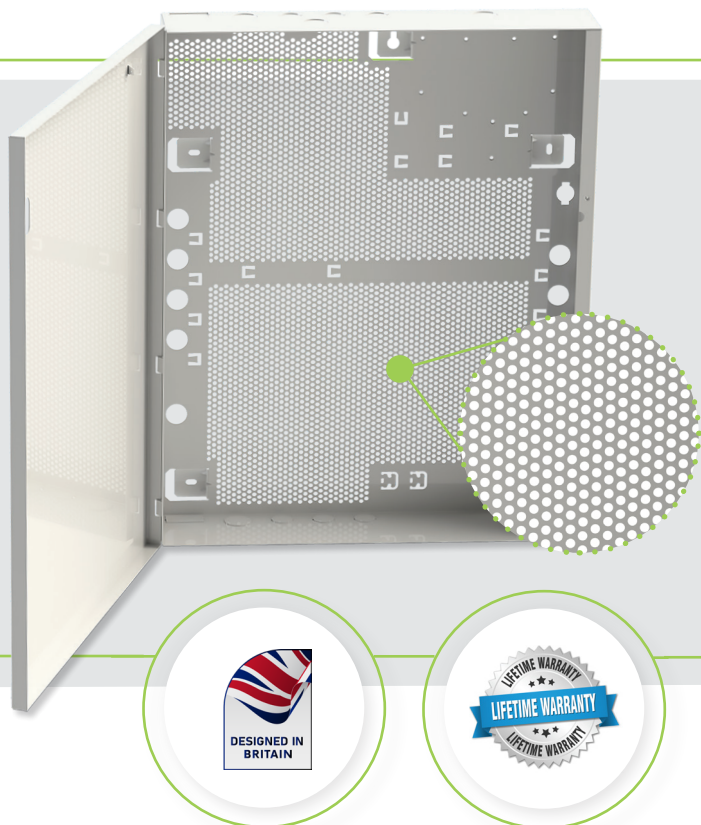


# UNIVERSAL ENCLOSURE RANGE

Tailored for general purpose applications  
Engineered by Elmdene

- Compatible with all common third-party devices
- Front & rear tamper protection as standard
- Comes with all fixings for third-party device installation
- Available in two sizes
- Can be used in conjunction with Elmdene power modules
- Quick & simple installation
- Added flexibility for installer
- Powder coated white steel enclosure
- High energy efficient - reducing energy bills
- Mesh backplate assists airflow
- Lifetime warranty



## DESCRIPTION

A unique range of enclosures, ideal for housing third party devices.

Provided with a mesh backplate and associated fixings, it allows the installer complete versatility on what and where components are fitted.

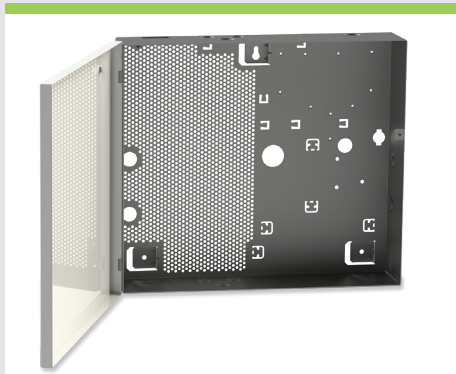
With an extensive range of modules, communicators, and control boards on the market, finding a suitable PSU enclosure to house these devices can be challenging. Elmdene's Universal Enclosure range provides a simple solution to this problem, providing complete flexibility whilst reducing installation times.

The choice of enclosure sizes and a variant that is provided with an integrated PSU (12Vdc or 24Vdc selectable), offers the installer an ideal solution for any security application.

## UNIVERSAL-1224-L TECHNICAL SPECIFICATIONS

<b>Output</b>	13.8V dc / 27.6V dc
<b>Mains Input</b>	90V - 264V ac at 50 - 60Hz
<b>Operating Temperature</b>	-10°C to 40°C at 95% RH
<b>Power Variant</b>	13.8V dc 8A / 27.6V dc 4A

## ORDERING INFORMATION

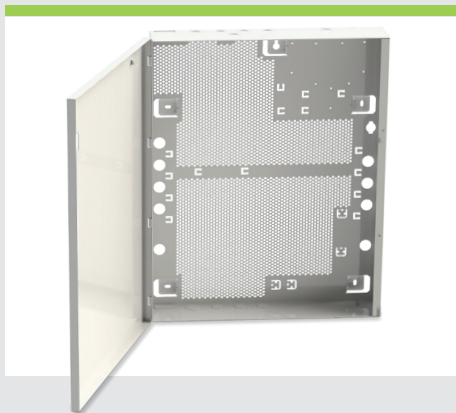


### PART NO

### DESCRIPTION

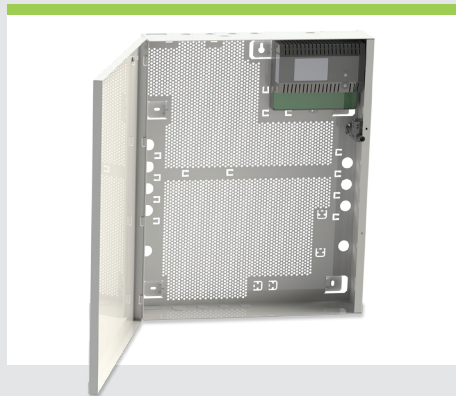
UNIVERSAL-ENC-M

Medium tampered enclosure with universal backplate  
H330 x W377 x D85 (mm)



UNIVERSAL-ENC-L

Large tampered enclosure with universal backplate  
H500 x W400 x D80 (mm)



UNIVERSAL-1224-L

Selectable 12V, 8A /24V, 4A, PSU in large tampered enclosure with universal backplate  
H500 x W400 x D80 (mm)