

TRANSIT Ultimate - Long Range Vehicle Identification

Product Description

The TRANSIT Ultimate is a robust long-range reader, based on semi active RFID technology, which enables automatic vehicle identification at distances of up to 10 metres and speeds of up to 125 mph.

This high-end reader is designed to perform well in both high security applications and demanding vehicular access control applications. It is also designed to perform under harsh environmental conditions. The TRANSIT Ultimate offers the highest level of security and convenience for both vehicles and drivers. The built-in antenna, an integrated read range adjustment board and a variety of communication interfaces to ensure seamless and flexible integration. The identification lobe of the reader is a directed beam, offering precise determination of the detection area. A second RFID communication channel is used for advanced bidirectional communication and secure tag authentication.



Features

- ▶ Robust industrial design
- ▶ Read range of up to 10 metres
- ▶ Object speed up to 125 mph
- ▶ Well defined adjustable read range
- ▶ Multi-channel selection
- ▶ Variety of integrated communication interfaces
- ▶ 3 colour LED indication
- ▶ Tag authentication based on AES Encryption
- ▶ Bi-directional communication using two RFID channels
- ▶ Supports backward-compatibility mode with previous TRANSIT readers

Applications

- | | |
|----------------------------------|--------------------------|
| ▶ Staff Car Parks | ▶ Tolling Systems |
| ▶ Priority Vehicle Control | ▶ Distribution Centres |
| ▶ Industrial Site Access Control | ▶ Bus Lane Control |
| ▶ Fleet Management | ▶ Taxi-feeder Systems |
| ▶ Parking Management | ▶ Vehicle Access Control |

Compact Tags

Credit card size. Identification up to 7 metres. Dual side read capability. Optional Tag Holder for windshield mounting.



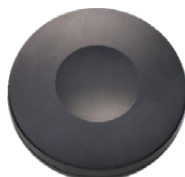
Booster

Combined long-range vehicle and driver identification at up to 10 metres. Supports HID prox, EM, Nedap, MIFARE, HID iClass and LEGIC credentials. Simultaneous driver & vehicle ID.



Window Button

Long range single ID tag. Identification up to 10 metres. Suits interior of a passenger vehicle. Easy windshield mounting with suction pad. Automatic transmission of vehicle ID.



Window Button Switch

Long range single ID tag. Identification up to 10 metres. Suits interior of a passenger vehicle. Easy windshield mounting with suction pad. User activated transmission of vehicle ID.



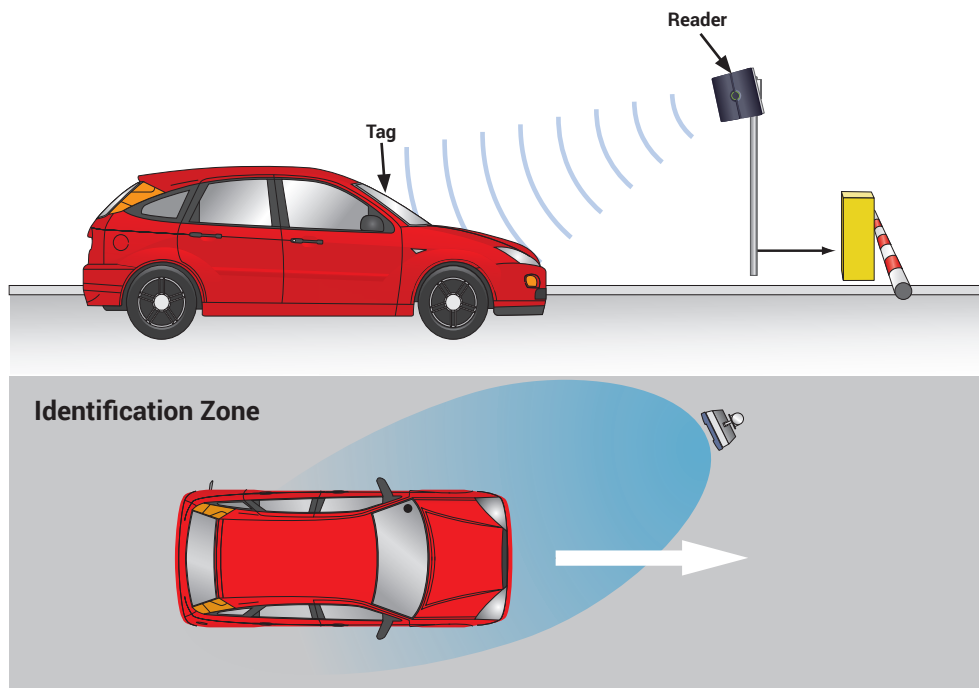
Heavy Duty Tag ISO

Durable, weatherproof RFID tag suitable for applications requiring reliable long range identification in harsh environmental conditions. Ideal for ID of trucks, trailers, containers and fork lifts. Identification up to 10 metres.



TRANSIT Ultimate - Long Range Vehicle Identification

Technical Details



Specifications

Dimensions:	330x274x140 mm
Weight:	5 kg
Housing:	Cover ABS, Housing Die-casting ADC12
Protection:	IP66
Detection range:	Up to 10 metres, message acceptance ratio > 80%
Operating temp:	-30°C to +60°C
Object speed:	Up to 124 mph at appropriate distance
Power supply:	100-240 VAC (60 - 50Hz) or 24 VDC (±10%)
Power cons:	<25VA (on AC), <20 Watt (on DC)
Operating freq.:	2.438 – 2.457 GHz, 433.62 & 434.22 MHz (RX-Cat 3) Ton <5 seconds
2.45 GHz channels:	32 channels, spacing 600 kHz to avoid interference, to be used when TRANSIT Ultimate readers are installed in close vicinity of each other
Air I/F 2.45 GHz:	Nedap proprietary encryption standard 1.875 kbps
Air I/F 433 MHz:	Encryption based upon diversified AES128; 300kbps/ GFSK 75 kHz; Duty cycle <1%; LBT not applicable
Polarization:	Circular (LHC) (2450 MHz) integrated antenna Horizontal (433 MHz); dedicated antenna

Relay output:	1 relay output (NO, common, NC), 24 VDC 2A, 120 VAC 1A
Inputs:	3 dry contacts or TTL
Audio:	Range check beeper
Output:	Barcode 39, Wiegand 26-bit, Wiegand 32-bit, Wiegand 37-bit, FF56 and Omron ISO 7811/2, USB
Interfaces:	USB, Wiegand, Magstripe, Barcode
Available I/F boards:	RS232 (default), RS422, RS485, TCP/IP, Profibus-DP
Comm protocols:	CR/LF, DC2/DC4 and various OEM protocols
Mounting:	Wall mounting set included Option Pole Mounting Kit available (5626595)

Certifications

EMC:	EMC directive EC: 2014/ 30/ EC; 2004/108/ EC; EN301489-1,-30,-17; EN6100-6-2; EN61000-6-3
Safety:	EN 60950, UL 60950, UL 50
Regulations:	FCC part 15.245 - EN 300 440; FCC part 15.231 a, b - EN 300 220

Ordering Information

9215689	Long range automatic vehicle and driver ID reader with identification at up to 10 metres.
----------------	---