

ATM SENTRY

NS-30VRC Installation and Setup Guide

A discreet integrated sensor light with camera, IR LEDs and strobing alarm in a weatherproof and vandal resistant enclosure.

Included in this box;

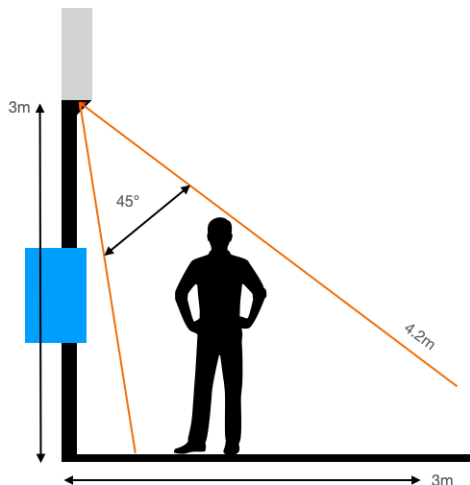
- 1x ATM Sentry Security Light
- 2x Torx screws for Screw covers
- 4x Fixing screws and plastic plugs
- 1x Torx key
- 2x Plastic bungs
- 1x BNC Crimp

Fitting

ATM Sentry is handed - the camera end must be on the right side as you look at the unit, otherwise the CCTV image will be upside-down! The camera end has no cable - the sensor end has the cable exit.



The unit can be mounted on a wall or under an overhang - such as a window-sill. Ideally fixing should be on all 4 mounting holes, into the wall and up into the overhang for optimum vandal resistance. Optimum mounting height is 2.5-4m

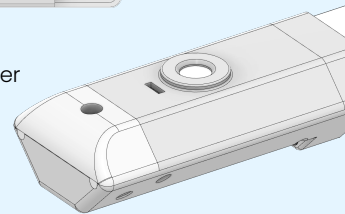


There are self tapping screws included in the accessory pack for wall fixing. Once the mounting position is prepared a cable hole will need to be drilled to hide and protect the cable, this exits behind the sensor end cap.

Once mounted to the surfaces fix the screw cover in place with the Torx screw and fit the 6mm plastic bung into the hole.



Screw Cover



Do not terminate the Coax cable until it has been routed through the wall.

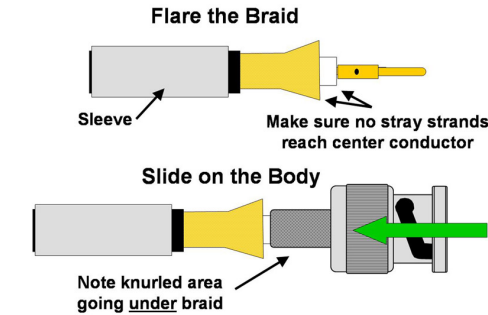
Connections

- Red: 12V+ DC
- Black: 0V DC GND
- Yellow: Alarm GND
- Green: Alarm Input
- Video Output: 75 Ohm Analogue PAL signal



BNC Crimp

Strip the mini coax cable, put the sleeve and shrink wrap onto the cable. Crimp the ferule on to the centre core then push into the BNC body until it clicks. Slide over the metal sleeve and crimp. Finish with heat shrink to protect the connection.



Operation

The ATM Sentry has integrated camera, motion sensor and photocell.

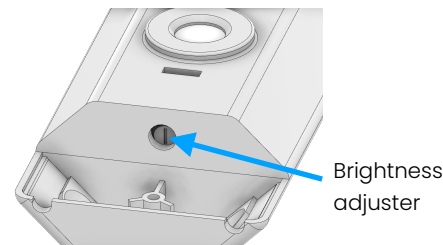
- Day time: Colour CCTV
- Night Time: Mono CCTV & IR illumination
- Night Motion: White light & Colour CCTV
- Alarm Trigger: Blue Strobe & Mono/IR CCTV

If the alarm input is triggered the blue LEDs will strobe until the alarm is cancelled (momentary Normally Open) if this occurs when it is dark the white LEDs will be disabled for maximum effect.

The PIR will detect movement at up to 6m with a detection zone of 45° wide.

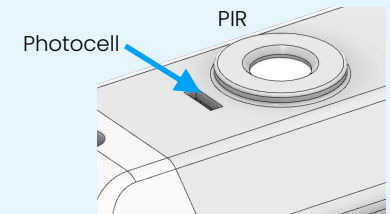
Adjustment

To adjust the brightness of the white light, rotate the potentiometer at the end of the sensor end cap anti-clockwise to dim and clockwise to brighten. Fully anti-clockwise is approx 20% of maximum output. Note the video quality may be affected if the LED light is turned down and there is insufficient ambient lighting to produce a clear colour image.



Troubleshooting

- 1) *No video signal*
 - a) Check power to light by shorting alarm input to trigger blue strobes.
 - b) Check BNC connector is correctly crimped, ferule should be flush with end of connector - not recessed.
- 2) *No white light*
 - a) Make sure there isn't too much ambient light hitting photocell - may trick unit into thinking still daylight.
 - b) Wave hand infant of PIR sensor whilst covering photocell.
- 3) *Poor Night vision*
 - a) Is the white light turned off? If no ambient light then camera image will suffer at night on motion when it switches to colour
 - b) Is the light mounted too high? Infra Red light range is around 4m depending on conditions.
 - c) Is the lens window clean and free of finger prints etc?



NS-30VRC	Specifications
Power	12vDC 800mA
Output	900Lm A++
Op Temp	-20° to +50°C
Warranty	12 months
Weatherproof	IP-65
Vandal Resistant	IK7
Dimensions	30x30x465mm

ATM SECURITY

UK Design Reg Number 006179335

Patent Pending

www.atmsecurity.co.uk



