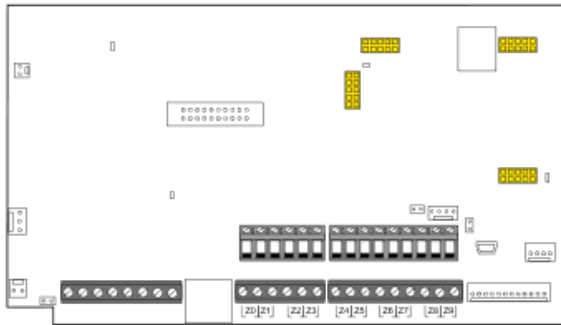
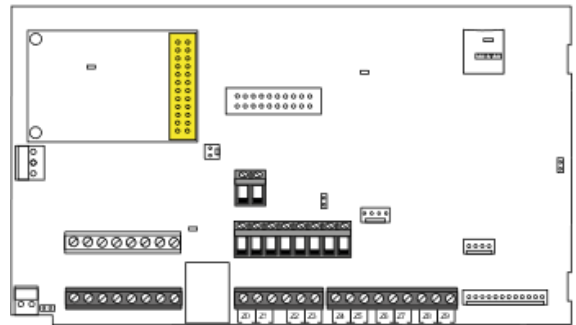


All i-on panels now support the new and improved communications footprint

Old communications footprint using 4 connection points

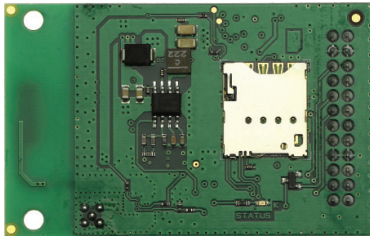


New communications footprint using a single connection point



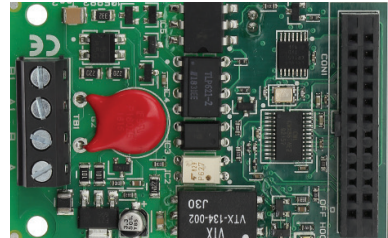
The new communications footprint provides the following communications options:

COM-DATA-4G



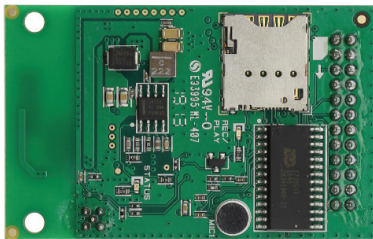
- Panel connectivity to Eaton SecureConnect for mobile app, programming, diagnostics, emails, ARC reporting and more.
- Single path or Back up to Ethernet for Dual path
- Requires a Micro SIM card with Data 4G or 2G

COM-SD-PSTN



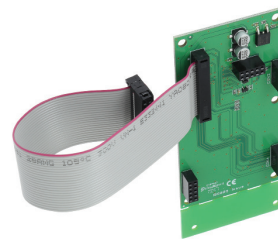
- Requires a PSTN line
- ARC Reporting
- SMS (via PSTN service centre)
- Speech Dialler
- Replaces i-sd02 and i-dig02

COM-SD-GSM



- ARC Reporting
- SMS
- Speech Dialler
- Requires a Micro SIM card with GSM voice (2G)
- Replaces i-gsm02

COM-ADPT-03



- Conversion board from new control panels to old communications footprint
- Provides compatibility for: i-gsm02, i-sd02, i-dig02 and 3rd party communications adaptors (CSL, WWO, Chiron etc.)