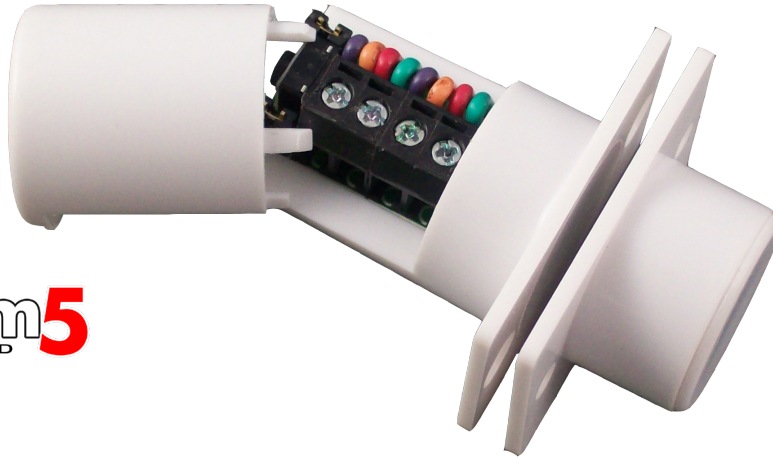


FC508/WH or BR/MULTI/G3/EN

FLUSH QUICK FIT DOOR CONTACT

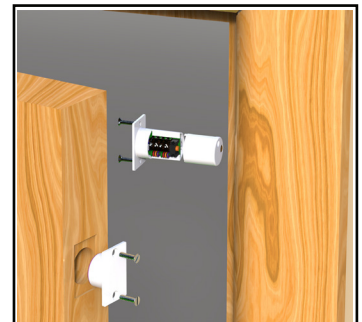
CQR

First choice for quality



System5
APPROVED

- Screw terminal block, no junction box required
- Microswitch tamper
- Selectable end of line resistor
- Can use own resistors
- Available in white or brown
- Can be fitted in double pole systems
- Can be used on double door configuration
- Magnetic Immunity



Product codes

Code	Description
FC508/WH/MULTI/G3/EN	Flush Contact Grade 3 White
FC508/BR/MULTI/G3/EN	Flush Contact Grade 3 Brown

Technical data

Connections	4 Terminals
Switches	2
Pull-in Gap	4mm
Material	High Impact Polystyrene
Contact Size	33 x 22 x 32mm
Magnet Size	33 x 22 x 13mm
Contact Form	SPST form A
Voltage Range	12Vdc

Switching Current	500mA @ 12Vdc
Contact Material	Rhodium
Colours	White or Brown
Tamper	Cover & RFMS
Magnetic Immunity	Yes
Standards	EN50131-2-6 Grade 3
Environmental Class	II

rev. 2-7/2018



www.cqr.co.uk

info@cqr.co.uk

Sales: +(0)151 606 1000 Tech: +(0)151 606 6311

CQR Security Ltd, 125 Pasture Road, Moreton, Wirral, CH46 4TH, UK



Scan or click for online

