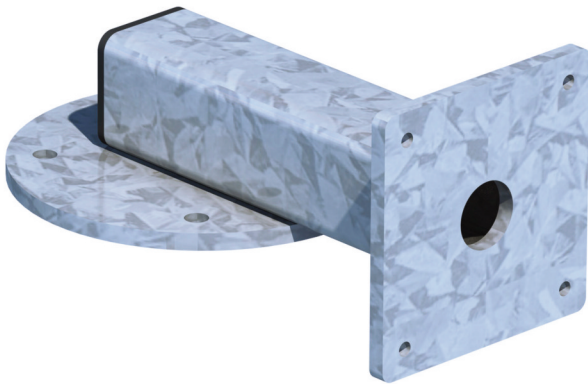


BCB-T: Top Mount - Bullet Camera Brackets

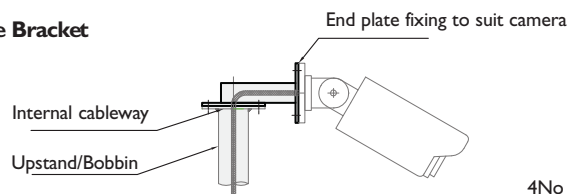


Altron Bullet Camera Brackets are a simple and cost-effective way of mounting Bullet Cameras on top of all Altron pole, tower and column products.

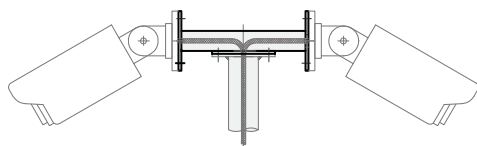
They can be provided for any Bullet Camera, just specify the camera make and model number when ordering.

Cableway allows internal cabling through bracket and mounting top plate, enabling a neat, secure installation

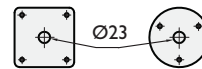
Single Bracket



Twin Bracket



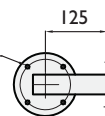
Examples of camera mount plates



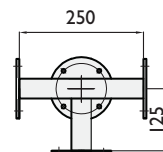
Mounting Options

4No Ø8.5 on a 101.6 PCD

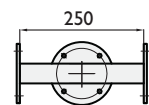
BCB-T1 Single



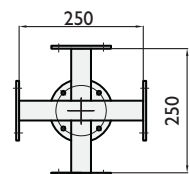
BCB-T3 3 Way



BCB-T2 Twin



BCB-T4 4 Way



Part numbers

Specify camera make and model when ordering

- BCB-T/1 1-way top mount bracket
- BCB-T/2 2-way top mount bracket
- BCB-T/3 3-way top mount bracket
- BCB-T/4 4-way top mount bracket

Construction/ finish

- Produced in high tensile steel
- Hot dip galvanised for longevity
- Painted or powder coated finishes on request

Notes

- Max load rating 10kgs per mounting position
- Also available as a pole clamp 'PMB' type bracket



ALTRON
The Pinnacle of
Camera Mounting

Altron Communications Equipment Ltd.

Tower House, Parc Hendre, Capel Hendre, Ammanford SA18 3SJ

Switchboard: +44 (0) 1269 831431

Sales: +44 (0) 1269 833222

Fax: +44 (0) 1269 845348

comms@altron.co.uk

www.altron.co.uk