

APERIO Wireless Locks

Configuration with ACT



Overview:

ACT Enterprise integrates with ASSA ABLOY Aperio wireless lock technology giving you the flexibility to expand your access control system to almost every opening in your facility. These locks become part of the ACT family of readers which include the VR Mullion range and the ACTpro 10x0 range. This means that locks can be part of the events, reports, maps, etc. that are core to the everyday security management with ACT Enterprise software.

The access control decisions on these locks are made by ACTpro controllers. The Aperio wireless locks on these controllers can be added without taking current doors away. Hubs are wired into the serial ports of the controllers meaning the wireless locks can be added to the site incrementally simply by purchasing the appropriate software license. An ACTpro controller supports up to 32 doors, these can be combinations of ACTpro 100 Door stations, readers directly connected to the ACTpro controller or up to 8 Aperio Hubs. Up to 16 wireless locks can be connected to one Actpro controller.

The locks communicate wirelessly with the Aperio hub which is hard-wired to the ACTpro controller. The wireless communication between the hub and the locks is protected with 128-bit AES encryption for the most secure communication.

Online transactions are available to the ACT Enterprise system in real -time providing a high level of control and visibility of door status and transactions.

With no need for additional wiring, ASSA ABLOY Aperio locks can be installed or retrofitted at existing facilities with little or no operational disruption. The locks come in a variety of form factors that accommodate a wide range of interior environment.



APERIO Wireless Locks

Configuration with ACT

Key Features include:

- ✓ Easy to install, no wiring at the door
- ✓ AES 128 bit encryption
- ✓ Battery life in excess of 40,000 transactions
- ✓ Up to 32 devices per controller - 16 of them wireless locks
- ✓ Real-time on line reporting such as card, access transactions, door status, low battery and tamper alarm monitoring
- ✓ All access and scheduling decisions made through the powerful ACT controllers

Functionalities:

While all of the Aperio locks have a similar interface, the product below have been thoroughly tested and are supplied by Vanderbilt. For detailed technical information please select the links provided.

Part no	Description	Website URL
N54521-F113-A100	APERIO H100 EURO LEFT Handle	https://accesscontrol.assaabloyopeningsolutions.co.uk/index.php?key=aperio&ID=178648&c=assaabloyberlin&treeID=231058&lang=en
N54521-F114-A100	APERIO H100 EURO RIGHT Handle	https://accesscontrol.assaabloyopeningsolutions.co.uk/index.php?key=aperio&ID=178648&c=assaabloyberlin&treeID=231058&lang=en
N54521-F115-A100	APERIO E100 V3 EURO reader	https://accesscontrol.assaabloyopeningsolutions.co.uk/index.php?key=aperio&ID=17181&c=assaabloyberlin&treeID=165103&lang=en
N54513-F114-A100	APERIO AH30 COMMS HUB RS485 1:8	https://accesscontrol.assaabloyopeningsolutions.co.uk/index.php?key=aperio&ID=19282&c=assaabloyberlin&treeID=165125&lang=en
N54513-F115-A100	APERIO AH20 WIEGAND COMMS HUB 1:1	https://accesscontrol.assaabloyopeningsolutions.co.uk/index.php?key=aperio&ID=19286&c=assaabloyberlin&treeID=165127&lang=en
N54513-F116-A100	APERIO USB RADIO DONGLE	https://accesscontrol.assaabloyopeningsolutions.co.uk/index.php?key=aperio&ID=20653&c=assaabloyberlin&treeID=165153&lang=en
N54521-F116-A100	APERIO E100 V3 EURO reader with Keypad	https://accesscontrol.assaabloyopeningsolutions.co.uk/index.php?key=aperio&ID=17181&c=assaabloyberlin&treeID=165103&lang=en

Notes:

Before installing ASSA Aperio products installers should register on the Assa installation course.

To configure Aperio locks and hubs an ASSA USB radio dongle key is required.

Integrators requiring the ASSA PAP Software tool to configure the Aperio locks and hubs must signup for access to the ASSA file share site to download the Programming Application (PAP tool), latest manuals and firmware from <https://fileshare.assaabloy.co.uk/>

For integrators requiring a wireless encryption keys for use with the PAP software tool contact Vanderbilt sales, there is no charge for the encryption key.

An ACT Enterprise door license is required for each ASSA Aperio wireless lock.

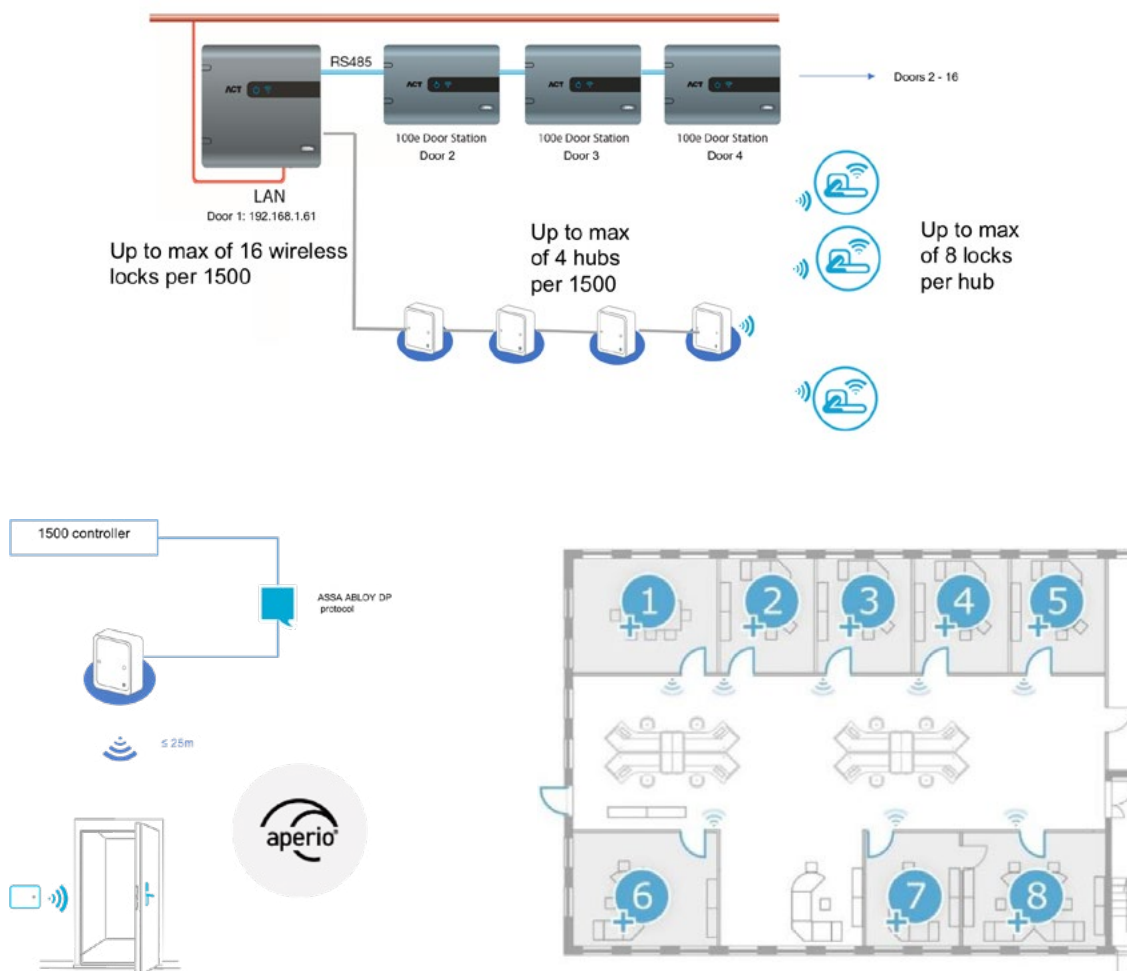
VANDERBILT

APERIO Wireless Locks

Configuration with ACT

Key Features include:

- ✓ RFID Technologies (Based on reader type)
- ✓ Classic® / MIFARE® DESFire® EV1&EV2; Legic: LEGIC® (Advant, Prime, ISO/IEC14443 UID,SO/IEC15693 UID); Optional MIFARE® Support
- ✓ RFID reading UID / Sektor / Block / Application / File / LEGIC®
- ✓ Segment Data
- ✓ RFID Reading range < 4 cm
- ✓ Communication interfaces Micro USB firmware download and battery back up Protocol



VANDERBILT

vanderbiltindustries.com

@VanderbiltInd

Vanderbilt Industries

Vanderbilt International Ltd.

Clonshaugh Business and Technology Park

Clonshaugh, Dublin D17 KV 84, Ireland

+353 1 437 2560