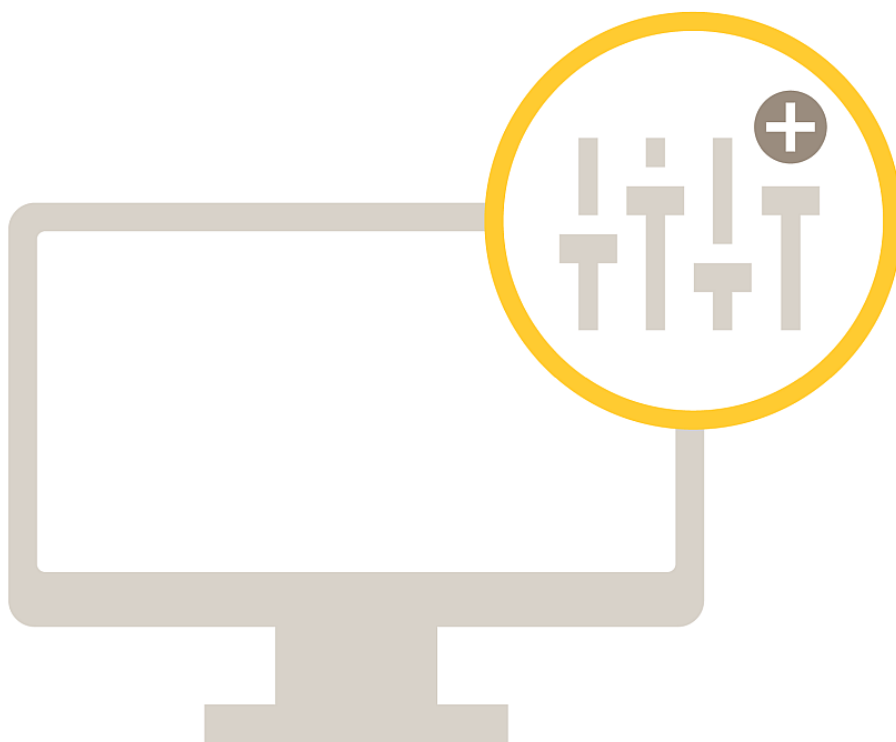


# AXIS Audio Manager Pro

Your gateway to the world of network audio

AXIS Audio Manager Pro provides easy, remote management of large IP audio installations. Take control of your complete audio system from one single user interface which handles, for example, system setup of audio devices, zone management, audio content management, and audio scheduling. AXIS Audio Manager Pro lets you handle live or scheduled announcements, emergency messages, broadcast background music and more, either individually in separate zones or to all the devices in all zones. With intuitive operation and online device status monitoring, AXIS Audio Manager Pro realizes the benefits of network audio. The AXIS Audio Manager Pro software is easy to install and can run both on dedicated hardware or virtual machines.

- > [One single user interface](#)
- > [Central control](#)
- > [Zone management](#)
- > [Audio content management](#)
- > [Scheduling](#)



# AXIS Audio Manager Pro

General	
	1000+ audio devices
Languages	English, Czech
Licenses	Unlimited
Compatible products	AXIS C1004-E, AXIS C2005, AXIS C3003-E, AXIS C8033, AXIS C8210, AXIS C1310-E, AXIS C1410
Operating system	Microsoft Windows 10 IoT 2016 LTSB
System requirements	
Minimum requirements	Hardware installation: Intel® Core™ i3-7100T Virtual machine support: VMware ESXi, Microsoft Hyper-V, and Microsoft Windows Datacenter with configuration and resources allocated similar to the minimum hardware requirements.
Audio	
Audio streaming	Stereo/mono from 32 kbps to 320 kbps, unicast or multicast, MPEG-1 Audio Layer 2 (MP2) for internal streaming See avlib audio codec support
VoIP	G.711u, G.711a
Network	
Supported protocols	IPv4, HTTP, DNS, NTP, RTP, RTSP, TCP, UDP, DHCP, SIP, mDNS, M3U
Security	Multiple user access levels with password protection
System integration	
Audio streaming	Support for internet radio by URL. Can be connected to Dante using virtual soundcards.
VoIP	Support for Session Initiation Protocol (SIP) for integration with Voice over IP (VoIP) systems. Peer to peer or integrated with SIP/PBX.
Events	
Event triggers	HTTP commands triggering Playback scheduler
System	
Logs	System log, syslog server support
Environmental responsibility: <a href="http://axis.com/environmental-responsibility">axis.com/environmental-responsibility</a>	